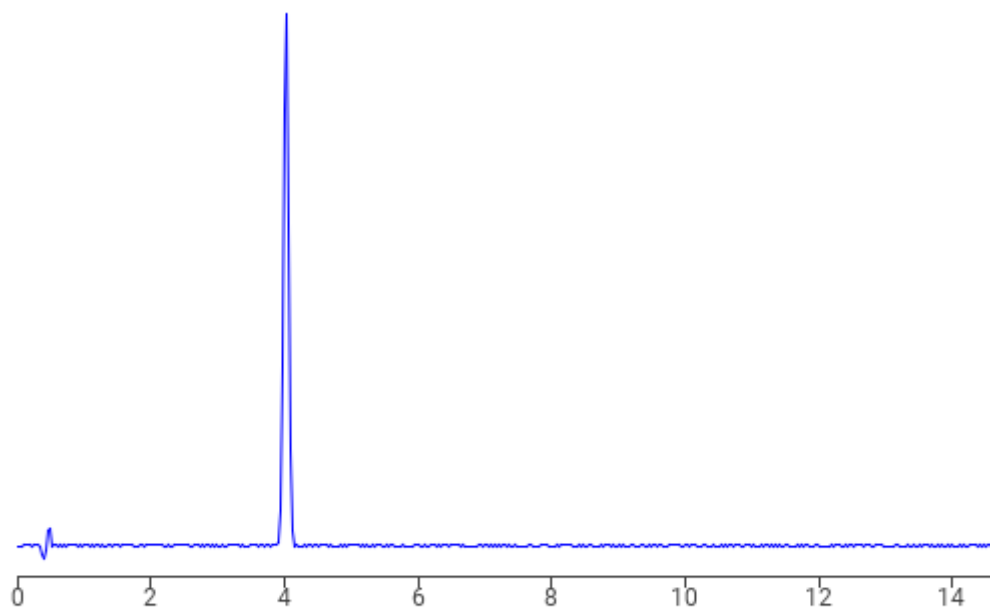


Separation of Theophylline monohydrate on Newcrom R1 HPLC column

<https://sielc.com/separation-of-theophylline-monohydrate-on-newcrom-r1-hplc-column>

Chromatogram



Column phase:	Newcrom R1
Mobile phase:	MeCN/H ₂ O/H ₃ PO ₄ - 10/90/0.1
Flow rate:	1.0 mL/min
Column size:	100 x 3.2 mm, 3 µm

Description

Theophylline monohydrate can be analyzed by this reverse phase (RP) HPLC method with simple conditions. The mobile phase contains an acetonitrile (MeCN), water, and phosphoric acid. For Mass-Spec (MS) compatible applications the phosphoric acid needs to be replaced with formic acid. Smaller 3 µm particles columns available for fast UPLC applications. This liquid chromatography method is scalable and can be used for isolation impurities in preparative separation. It also suitable for pharmacokinetics.