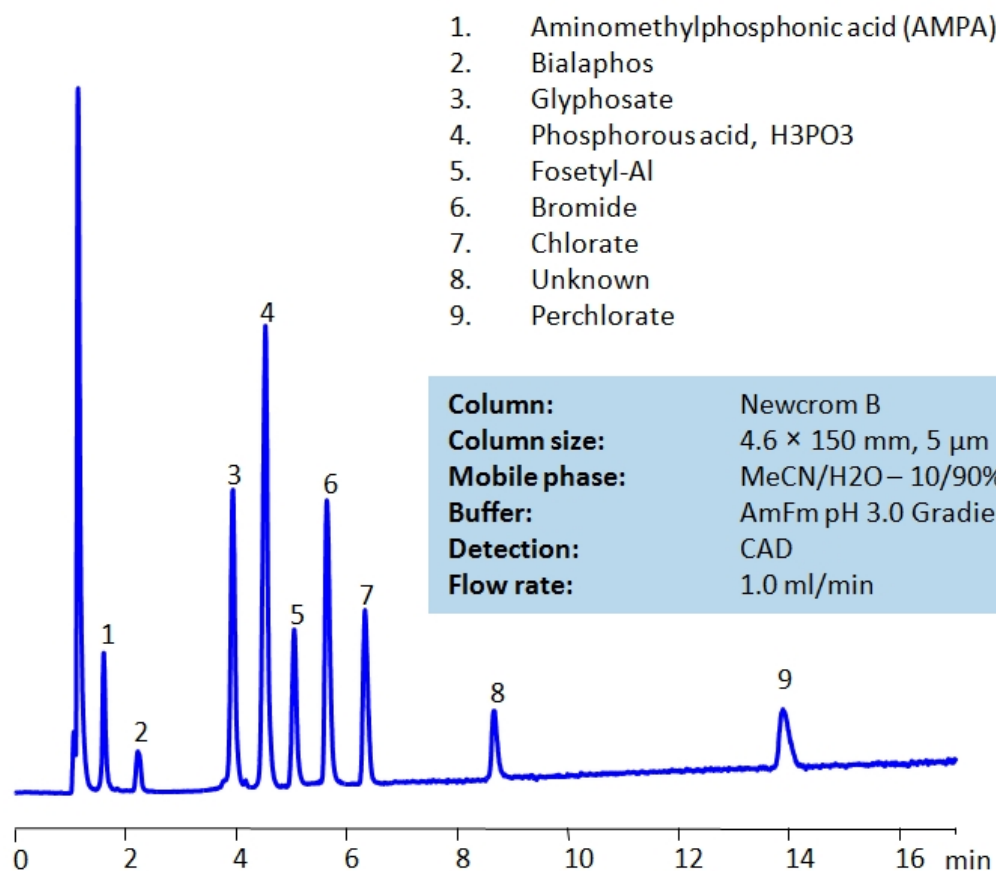


# HPLC Separation of Polar Pesticides on Newcrom B Column

<https://sielc.com/hplc-separation-of-polar-pesticides-on-newcrom-b-column>

## Chromatogram



## Description

High Performance Liquid Chromatography (HPLC) Method for Analysis of Glyphosate , Phosphorous acid , Fosetyl-Al , Bromide , Chlorate , Perchlorate , Bialaphos , Aminomethylphosphonic acid (AMPA) , Bromate , Sodium Bromate , 3-(Methylphosphinico)propionic acid .

Pesticide is a more generic term that includes herbicides, fungicides and insecticides in its definition. Herbicides are used to control unwanted plants, they are also known as weedkillers. Insecticides are used to kill insects. Fungicides are used to kill parasitic fungi. All are heavily used in agriculture. By using HPLC, many different pesticides can be separated and their retention characteristics controlled using the Newcrom B mixed-mode column.

## Method Parameters

<b>Mobile Phase</b>	MeCN/H <sub>2</sub> O – 10/90%
<b>Buffer</b>	AmFm pH 3.0 Gradient 5 – 15 mM 10 min
<b>Flow Rate</b>	1 ml/min
<b>Detection</b>	CAD

<b>Class of Compounds</b>	Pesticides, Herbicides, Fungicides, Insecticides
<b>Analyzing Compounds</b>	Glyphosate, Phosphorous acid, Fosetyl-Al, Bromide, Chlorate, Perchlorate, Bialaphos, Aminomethylphosphonic acid (AMPA), Bromate, Sodium Bromate, 3-(Methylphosphinico)propionic acid

#### HPLC Column Used

**Newcrom B, 4.6 x 150 mm, 5 µm, 100 A, dual ended**

[Order this column at hplc-shop.de →](#)