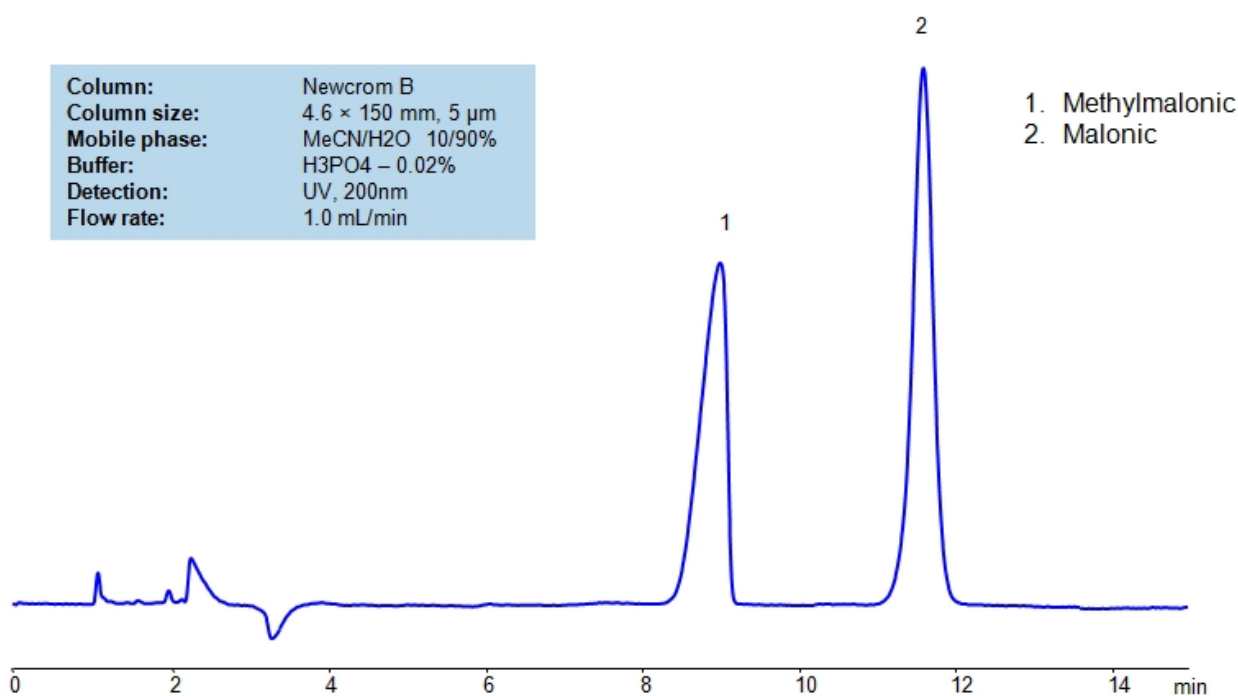


HPLC Separation of Methylmalonic and Malonic Acid on Newcrom B Column

<https://sielc.com/hplc-separation-of-methylmalonic-and-malonic-acid>

Chromatogram



HPLC Separation of Methylmalonic and Malonic Acid on Newcrom B Column_1199

Description

High Performance Liquid Chromatography (HPLC) Method for Analysis of Methylmalonic Acid , Malonic Acid .

Methylmalonic Acid is an organic acid with the chemical formula $C_4H_6O_4$. It works as an intermediate in the breakdown of certain amino acids and fatty acids. Elevated levels of Methylmalonic acid can be a sign of a Vitamin B12 deficiency or Methylmalonic acidemia, which is a rare genetic disorder where the previously mentioned acid is not properly metabolized, leading to its accumulation.

Malonic Acid is an organic acid with the $C_3H_4O_4$ chemical formula. It has a variety of uses from synthesis to preservatives. When it comes to synthesis, it is often used in industrial means. and especially dyes for natural fibers. Besides industrial use, in laboratory environments, it is used in preparation of tris-maleate, sodium maleate buffers, and maleate salts.

Methylmalonic Acid , Malonic Acid can be retained and analyzed using the Newcrom B stationary phase column. The analysis utilizes an isocratic method with a simple mobile phase consisting of water and acetonitrile (MeCN) with a triethanolamine buffer. Detection is performed using UV.

Method Parameters

Mobile Phase	MeCN/H ₂ O – 10/90%
Buffer	H ₃ PO ₄ – 0.02%
Flow Rate	1.0 ml/min

Detection	UV 200nm
Class of Compounds	Acid, Hydrophilic, Polar
Analyzing Compounds	Methylmalonic Acid, Malonic Acid

HPLC Column Used

Newcrom B, 4.6 x 150 mm, 5 µm, 100 A, dual ended

[Order this column at hplc-shop.de →](http://hplc-shop.de)