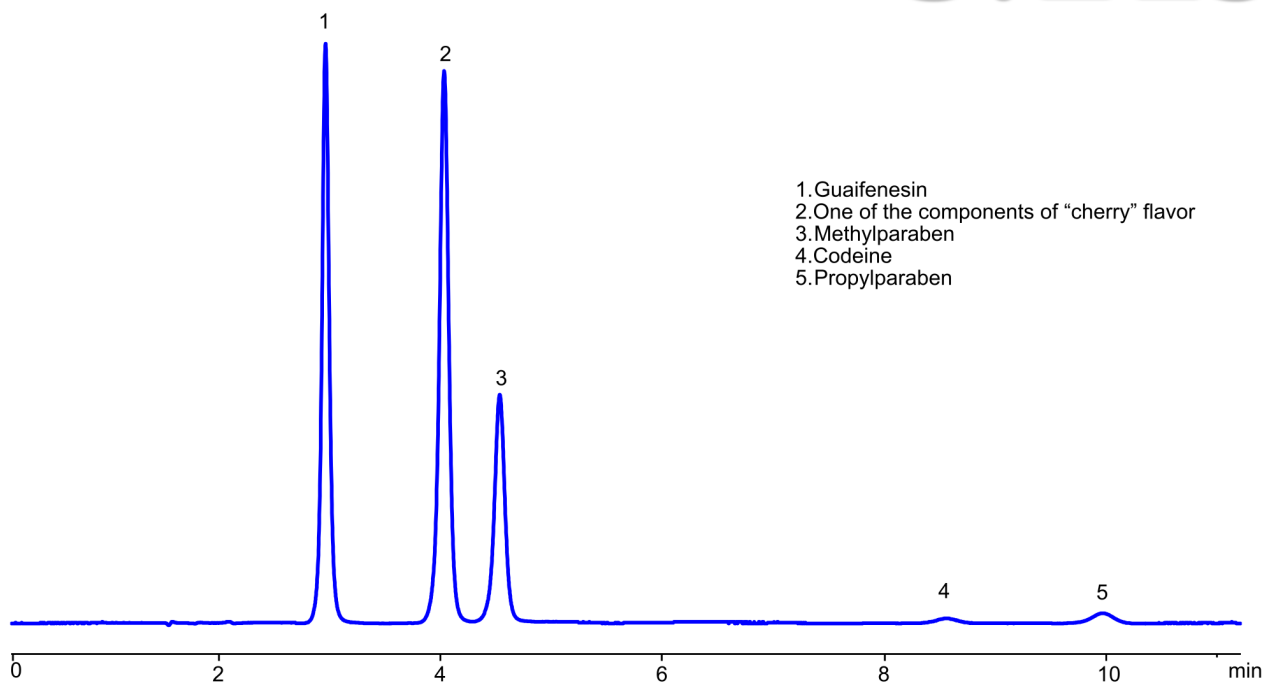


# HPLC Method for Analysis of Codeine and Guaifenesin in Cough syrup on Primesep 100 Column

<https://sielc.com/hplc-ms-method-for-analysis-codeine-and-guaifenesin>

## Chromatogram



<b>Column :</b>	Primesep 100
<b>Column size:</b>	4.6 x150 mm, 5 µm
<b>Column part number:</b>	100-46.150.0510
<b>Mobile phase:</b>	MeCN/H <sub>2</sub> O – 30/70%
<b>Buffer:</b>	H <sub>2</sub> SO <sub>4</sub> - 0.2%
<b>Flow rate:</b>	1.0 mL/min
<b>Detection:</b>	UV 270 nm
<b>Sample:</b>	Codeine 0.2 mg/ml, Guaifenesin 2 mg/ml
<b>Diluent:</b>	H <sub>2</sub> O
<b>Injection volume:</b>	1 µl

## Description

· High Performance Liquid Chromatography (HPLC) Method for Analysis of Codeine , Guaifenesin

Codeine is a pain reliever and cough suppressant . It belongs to the opioid family (like morphine, but milder). Guaifenesin is an expectorant , which helps loosen mucus in your chest so you can cough it up more easily.

Codeine , Guaifenesin can be retained and analyzed using the Primesep 100 stationary phase column. The analysis utilizes an isocratic method with a simple mobile phase consisting of water, acetonitrile (MeCN), and sulfuric acid. Detection is performed using UV at 270 nm.

#### Method Parameters

<b>Mobile Phase</b>	MeCN – 30%
<b>Buffer</b>	H2SO4 – 0.2%
<b>Flow Rate</b>	1.0 ml/min
<b>Detection</b>	UV 270 nm
<b>Class of Compounds</b>	Drug
<b>Analyzing Compounds</b>	Codeine,Guaifenesin

#### HPLC Column Used

**Primesep 100, 4.6 x 150 mm, 5 µm, 100 A, dual ended**

[Order this column at hplc-shop.de →](http://hplc-shop.de)