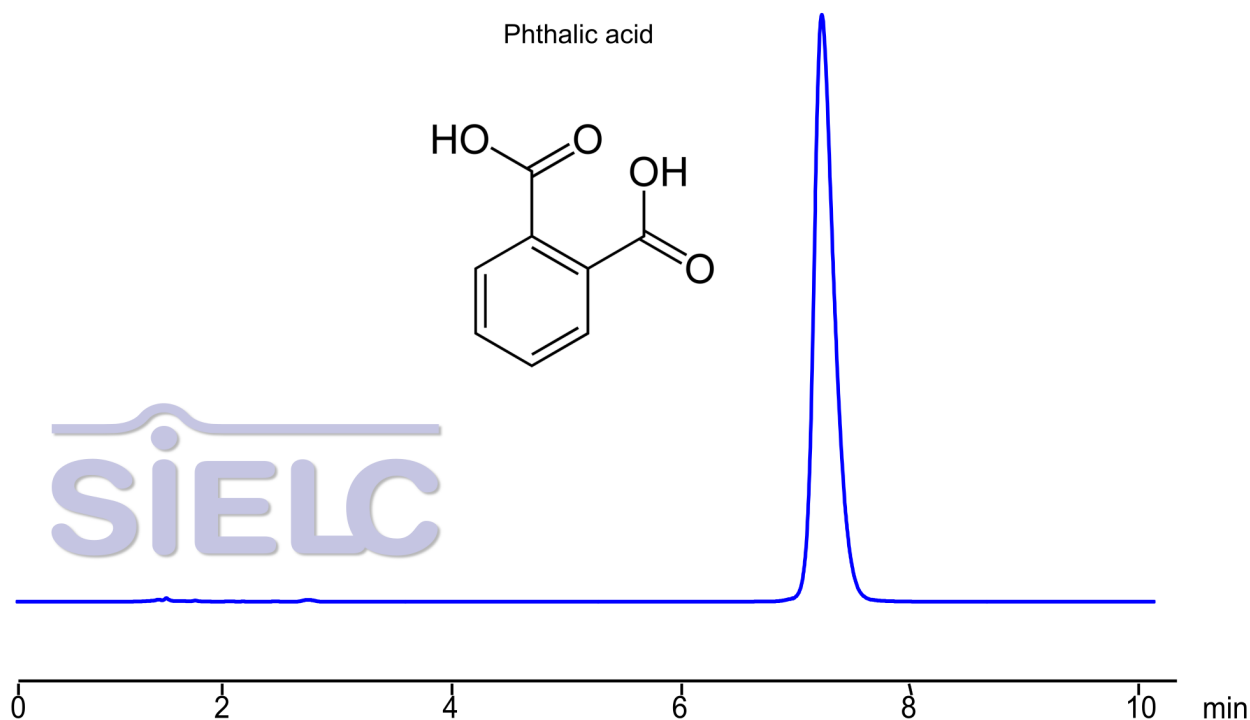


# HPLC Method for Analysis of Phthalic acid on Primesep B Column

<https://sielc.com/hplc-method-phthalic-acid>

## Chromatogram



<b>Column:</b>	Primesep B
<b>Column size:</b>	4.6 × 150 mm, 5 µm
<b>Column part number:</b>	B-46.150.0510
<b>Mobile phase:</b>	MeCN/H <sub>2</sub> O - 30/70%
<b>Buffer:</b>	H <sub>2</sub> SO <sub>4</sub> - 0.1%
<b>Flow rate</b>	1.0 ml/min
<b>Detection:</b>	UV 200 nm
<b>Concentration:</b>	1.0 mg/ml
<b>Injection Volume:</b>	1 µL
<b>Diluent:</b>	MeCN/H <sub>2</sub> O - 50/50%
<b>Limit of Detection:</b>	5 ppb

## Description

· Separation type: Liquid Chromatography Mixed-mode SIELC Technologies · HPLC Method for Analysis of Phthalic Acid on Primesep B Column

Phthalic acid is an aromatic dicarboxylic acid with the chemical formula  $C_6H_4(COOH)_2$ . It consists of a benzene ring with two carboxylic acid groups (-COOH) attached to adjacent carbon atoms (in the ortho position). It is mainly produced by the oxidation of naphthalene or o-xylene.

Uses Phthalic acid is primarily used as a precursor to other chemicals, including:

Phthalic anhydride: Used in the production of plasticizers for PVC (polyvinyl chloride). Alkyd resins: Important in the manufacture of paints and coatings. Dyes and pigments: Phthalic acid derivatives are often used in the production of dyes.

Phthalic Acid can be retained, separated and analyzed using a Primesep B mixed-mode stationary phase column. The analysis employs a gradient method with a simple mobile phase comprising water, acetonitrile (MeCN), and phosphoric acid as a buffer. This method allows for detection using UV 200 nm.

You can find detailed UV spectra of Phthalic Acid and information about its various lambda maxima by visiting the following link .

#### Method Parameters

<b>Mobile Phase</b>	MeCN/H <sub>2</sub> O – 30/70%
<b>Buffer</b>	H <sub>2</sub> SO <sub>4</sub> – 0.1%
<b>Flow Rate</b>	1.0 ml/min
<b>Detection</b>	UV 200 nm
<b>Limit of Detection</b>	5 ppb
<b>Class of Compounds</b>	Acid
<b>Analyzing Compounds</b>	Phthalic Acid

#### HPLC Column Used

**Primesep B, 4.6 x 150 mm, 5 µm, 100 Å, dual ended**

[Order this column at hplc-shop.de →](http://hplc-shop.de)