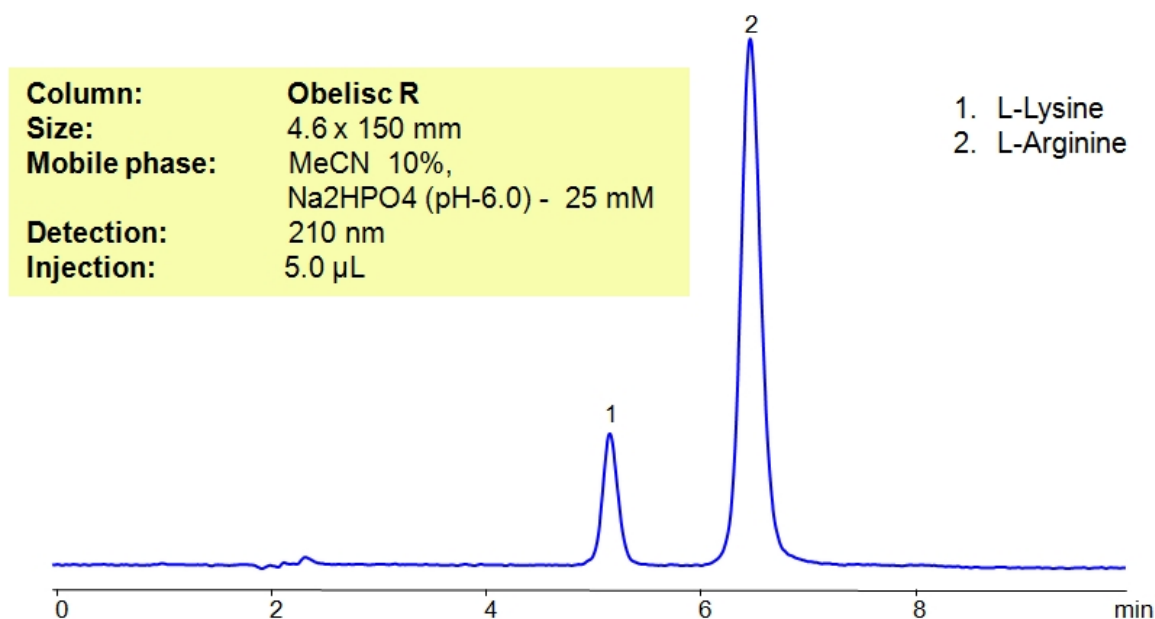


# HPLC Method for Analysis of L-Lysine and L-Arginine

<https://sielc.com/hplc-method-for-analysis-of-l-lysine-and-l-arginine>

## Chromatogram



*L-Lysine , L-Arginine Chr\_1106*

## Description

· HPLC Method for Lysine , D-Lysine , Arginine , N-Nitro-L-arginine on Obelisc R by SIELC Technologies

High Performance Liquid Chromatography (HPLC) Method for Analysis of Lysine , D-Lysine , Arginine , N-Nitro-L-arginine

L-Lysine is an essential amino acid required for growth and tissue repair, it can also help with anxiety. The amino acid is most often found in red meats, beans, fish, and dairy products. L-Arginine is an essential amino acid that is used to treat congestive heart failure, combat fatigue and circulatory diseases. It is also used to stimulate the immune system. Obelisc R is a reverse-phase column. It contains embedded ionic groups and can retain L-Lysine and L-Arginine. The method is UV compatible and can be used as a general approach for analyzing similar compounds.

## Method Parameters

<b>Mobile Phase</b>	MeCN/H <sub>2</sub> O – 10/90%
<b>Buffer</b>	Na <sub>2</sub> HPO <sub>4</sub> pH 6.0 – 25 mM
<b>Flow Rate</b>	1.0 ml/min
<b>Detection</b>	UV, 210 nm
<b>Class of Compounds</b>	Drug, Acid, Hydrophilic, Ionizable, Vitamin, Supplements, Amino acid

**Analyzing Compounds**

Lysine,D-Lysine,Arginine,N-Nitro-L-arginine

**HPLC Column Used**

**Obelisc R, 4.6 x 150 mm, 5 µm, 100 Å, dual ended**

[Order this column at hplc-shop.de →](http://hplc-shop.de)