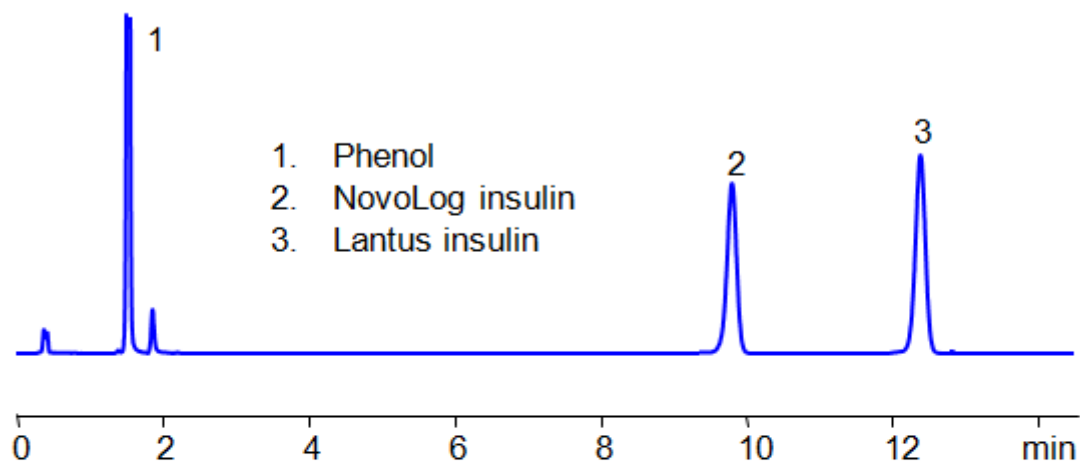


# HPLC Method for Analysis of Insulin on BIST™B+ Column

<https://sielc.com/hplc-method-for-analysis-of-insulin>

## Chromatogram



<b>Column:</b>	BIST™ B+
<b>Size:</b>	4.6 × 150mm, 5 µm
<b>Flow:</b>	1.0 mL/min
<b>Mobile phase:</b>	Gradient MeCN – 75 → 55%, 15 min
<b>Buffer:</b>	H <sub>2</sub> SO <sub>4</sub> – 0.2%
<b>Detection:</b>	UV 210 nm

## Method Parameters

<b>Mobile Phase</b>	MeCN Gradient
<b>Buffer</b>	H <sub>2</sub> SO <sub>4</sub> – 0.2%
<b>Flow Rate</b>	1.0 ml/min
<b>Detection</b>	UV 210 nm
<b>Class of Compounds</b>	Polymer, Protein
<b>Analyzing Compounds</b>	Insulin

## HPLC Column Used

**BIST™B+, 4.6×150 mm, 5 µm, 100A**