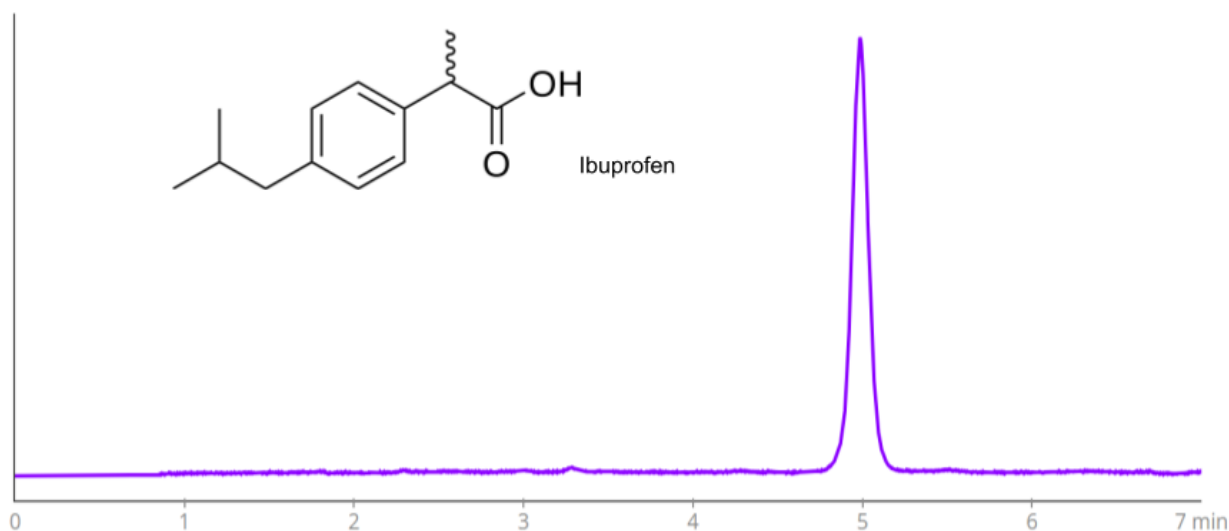


HPLC Method for Analysis of Ibuprofen on Primesep 100 Column on Alltesta™

<https://sielc.com/hplc-method-for-analysis-of-ibuprofen-2>

Chromatogram

SIELC



Column	Primesep 100
Column Size	4.6 x 150 mm, 5 µm
Part Number	100-46.150.0510
Mobile Phase	MeCN/H ₂ O - 50/50%
Buffer	H ₂ SO ₄ - 0.2%
Flow Rate	1.0 mL/min
Injection Volume	10 µL
Detection	UV 275 nm
Device	Alltesta™ Gradient Automated Analyzer

Description

· High Performance Liquid Chromatography (HPLC) Method for Analysis of Ibuprofen

Ibuprofen is a nonsteroidal anti-inflammatory drug (NSAID) with the chemical formula C₁₃H₁₈O₂. It is used primarily to relieve pain, fever, and inflammation. There are numerous adverse effects to taking ibuprofen, including but not limited to nausea, heightened risk of hypertension, kidney impairment, and bronchospasm.

Ibuprofen can be retained and analyzed using the Primesep 100 stationary phase column. The analysis utilizes an isocratic method with a simple mobile phase consisting of water and acetonitrile (MeCN) with phosphoric acid as a buffer. Detection is

performed using UV.

Method Parameters

Mobile Phase	MeCN – 50%
Buffer	Sulfuric Acid
Flow Rate	1.0 mL/min
Detection	UV 275 nm
Class of Compounds	Drug
Analyzing Compounds	Ibuprofen

HPLC Column Used

Primesep 100, 4.6 x 150 mm, 5 µm, 100 A, dual ended

[Order this column at hplc-shop.de](http://hplc-shop.de) →