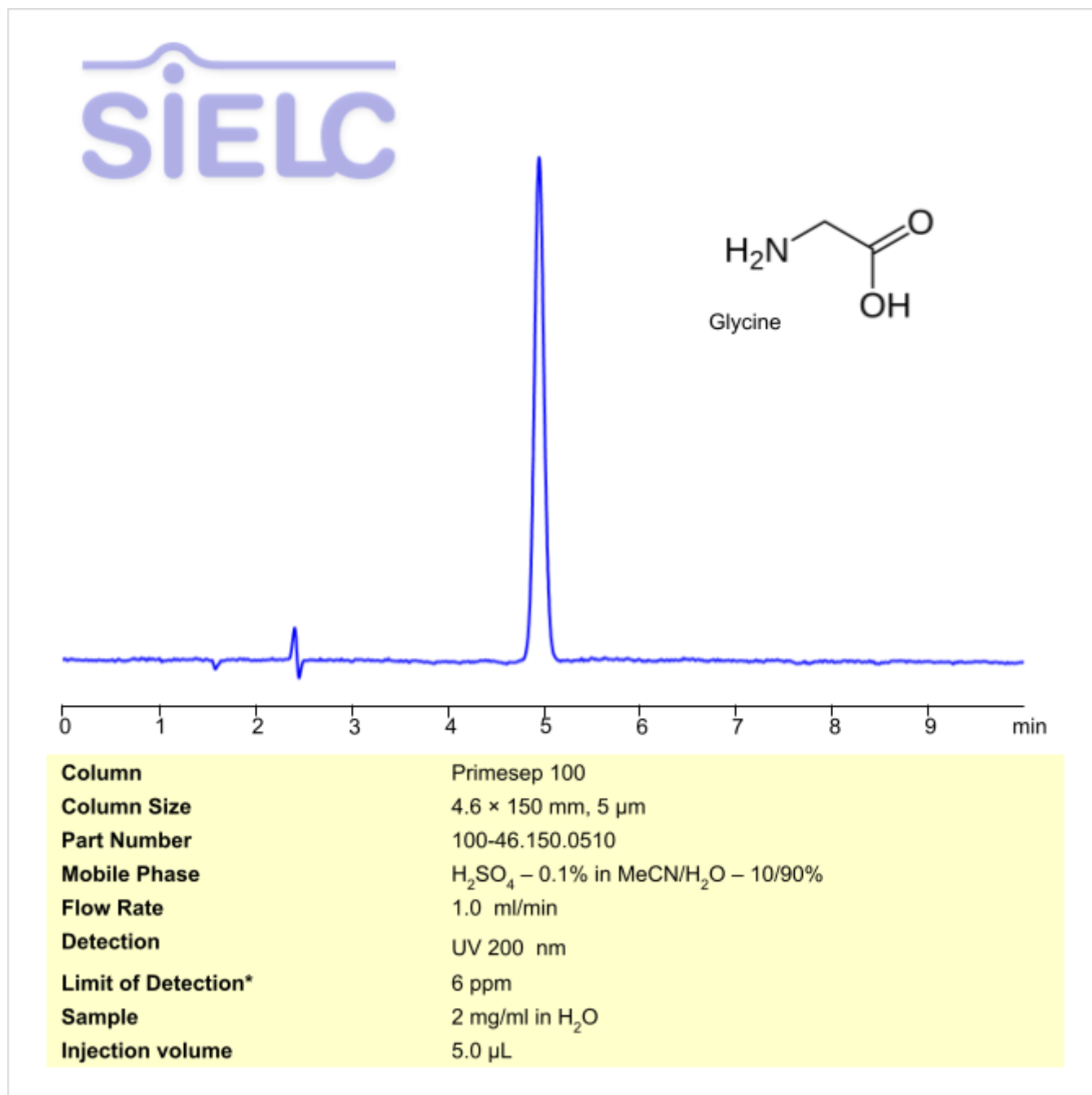


HPLC Method for Analysis of Glycine on Primesep 100 Column

<https://sielc.com/hplc-method-for-analysis-of-glycine>

Chromatogram



Description

· High Performance Liquid Chromatography (HPLC) Method for Analysis of Glycine .

Glycine , also written as Gly or G , is an important amino acid compounds widely used in pharmaceutical, biochemical, and peptide research. It has the chemical formula C₂H₅NO₂ . It is water-soluble and plays a critical role in protein synthesis, peptide modification, and metabolic studies. It can be found in meat., eggs. and bones. You can find detailed UV spectra of Glycine and information about its various lambda maxima by visiting the following link.

Glycine can be retained and analyzed using the Primesep 100 stationary phase column. The analysis utilizes an isocratic method with a simple mobile phase consisting of water and acetonitrile (MeCN) with sulfuric acid as a buffer. Detection is performed

using UV.

Method Parameters

Mobile Phase	MeCN – 10%
Buffer	Sulfuric Acid – 0.1%
Flow Rate	1.0 mL/min
Detection	UV 200 nm
LOD*	6 ppm
Class of Compounds	Amino Acids
Analyzing Compounds	Glycine

HPLC Column Used

Primesep 100, 4.6 x 150 mm, 5 µm, 100 A, dual ended

[Order this column at hplc-shop.de →](http://hplc-shop.de)