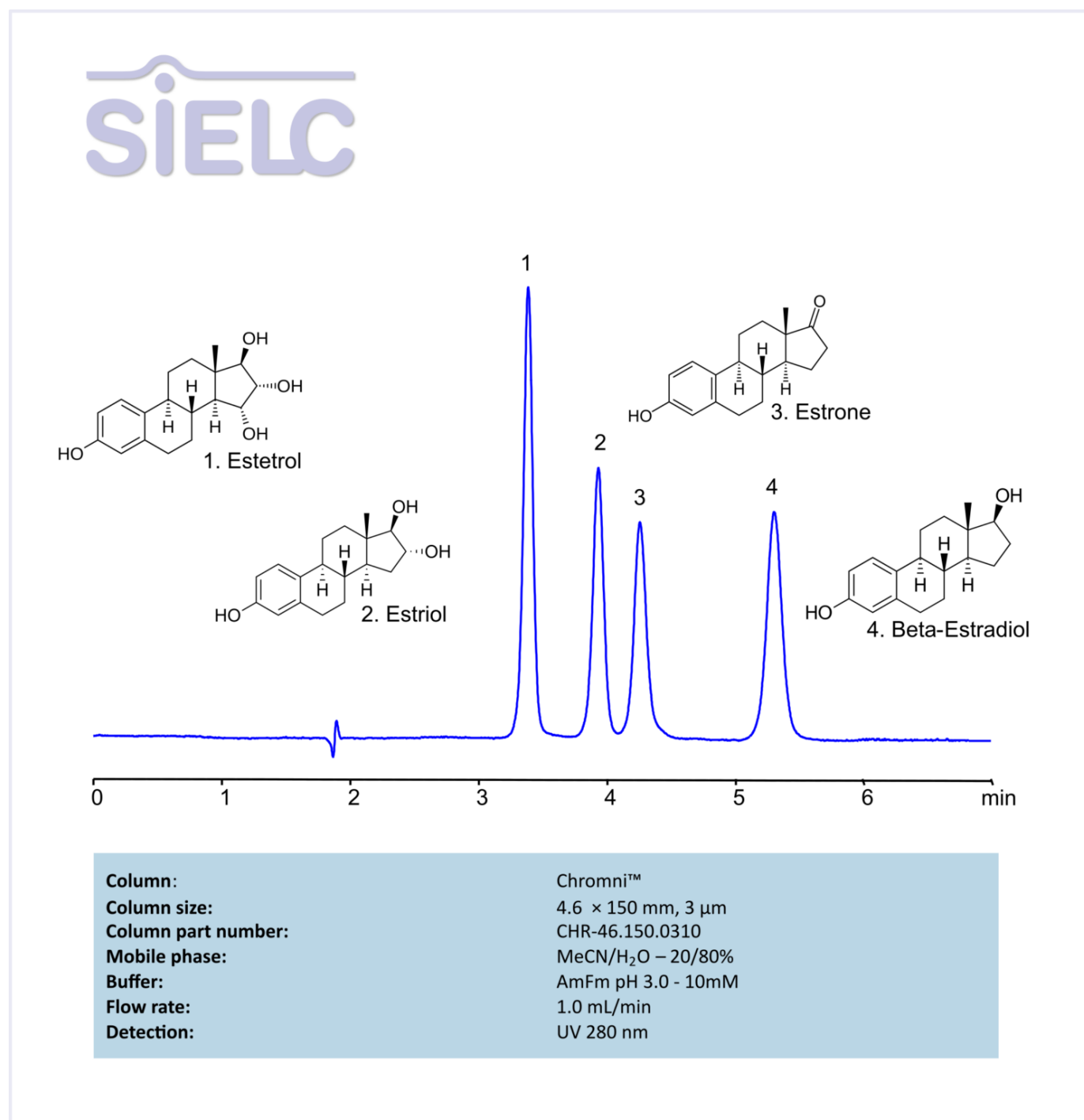


# HPLC Method for Analysis of Estetrol, Estiol, Estrone, and Beta-Estradiol on Chromni Column

<https://sielc.com/hplc-method-for-analysis-of-estetrol-estiol-estrone-beta-estradiol>

## Chromatogram



## Description

High Performance Liquid Chromatography (HPLC) Method for Analysis of Estrone , Estradiol , Estetrol , Estriol

Estetrol is an synthetic organochlorine compound with the molecular formula C<sub>18</sub>H<sub>24</sub>O<sub>4</sub>. . Properties: Appearance: Typically a white, odorless, powder. . Molecular weight: ~270.4 g/mol . Solubility: Soluble in water. . Uses: Production of contraceptives. .  
Estriol is an synthetic organochlorine compound with the molecular formula C<sub>18</sub>H<sub>24</sub>O<sub>3</sub>.

## Method Parameters

<b>Mobile Phase</b>	MeCN – 20%
<b>Buffer</b>	Ammonium Formate – 10mM
<b>Flow Rate</b>	1.0 ml/min
<b>Detection</b>	UV 280 nm
<b>Class of Compounds</b>	Estrogen
<b>Analyzing Compounds</b>	Estrone,Estradiol,Estetrol,Estriol

## HPLC Column Used

**Chromni, 4.6 x 150 mm, 3 µm, 100 A, dual ended**

[Order this column at hplc-shop.de](http://hplc-shop.de) →