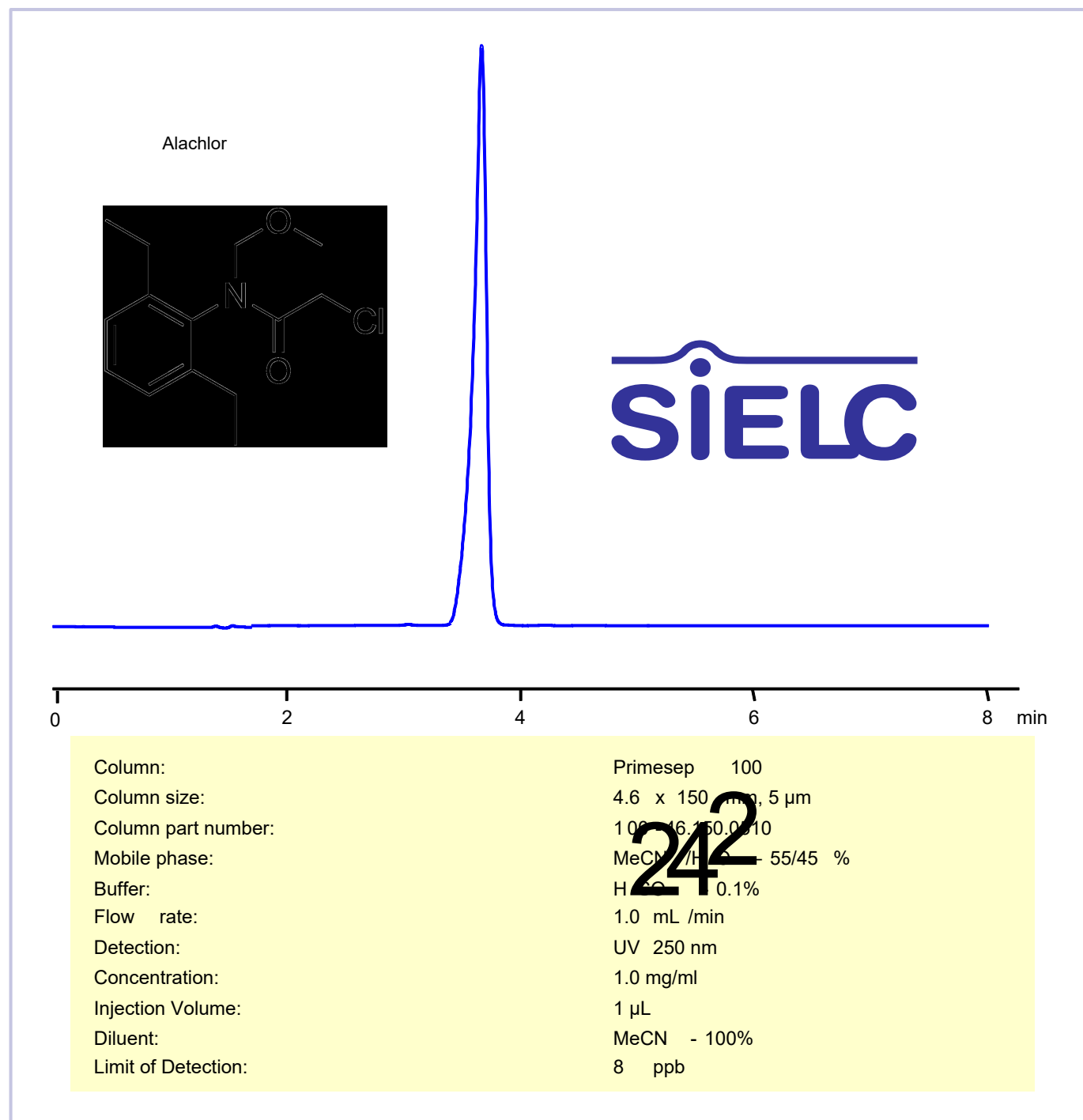


# HPLC Method for Analysis of Alachlor on Primesep 100 Column

<https://sielc.com/hplc-method-for-alachlor>

## Chromatogram



## Description

· Separation type: Liquid Chromatography Mixed-mode SIELC Technologies · HPLC Method for Analysis of Alachlor on Primesep 100 Column

Alachlor is a chloroacetanilide herbicide used to control annual grasses and broadleaf weeds primarily in corn and soybean crops. It is known for its pre-emergent activity, meaning it is applied to the soil to prevent weed germination and growth.

Alachlor be retained and analyzed using a Primesep 100 mixed-mode stationary phase column. The analysis employs an isocratic method with a simple mobile phase comprising water, acetonitrile (MeCN), and sulfuric acid as a buffer. This method allows for detection using UV 200 nm

#### Method Parameters

<b>Mobile Phase</b>	MeCN – 55%
<b>Buffer</b>	H2SO4 -0.1%
<b>Flow Rate</b>	1.0 ml/min
<b>Detection</b>	UV 200 nm
<b>Samples</b>	1.0 mg/ml in MeCN – 100%
<b>Injection volume</b>	1 µl
<b>LOD*</b>	8 ppb (200 nm)
<b>Class of Compounds</b>	chloroacetanilide herbicides
<b>Analyzing Compounds</b>	Alachlor

#### HPLC Column Used

**Primesep 100, 4.6 x 150 mm, 5 µm, 100 Å, dual ended**

[Order this column at hplc-shop.de](http://hplc-shop.de) →