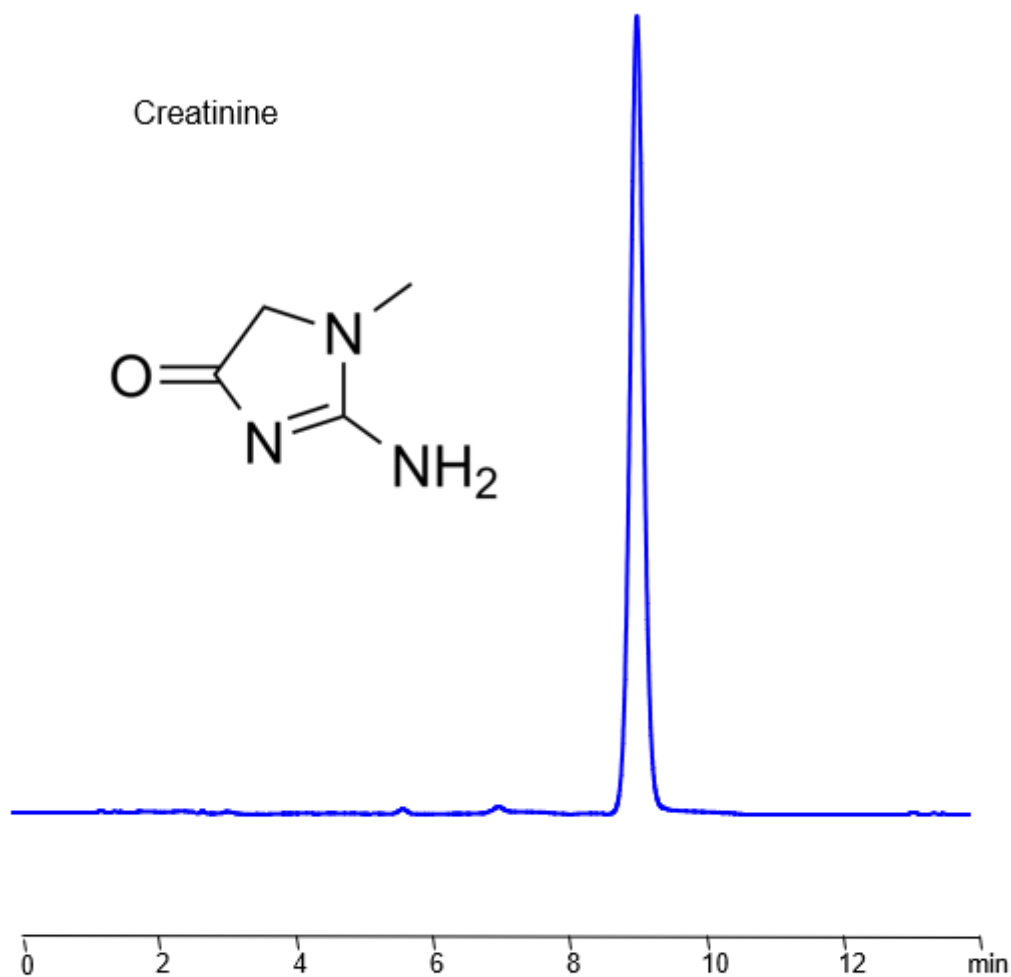


# HPLC Method for Analysis of Creatinine on BIST B+ by SIELC Technologies

<https://sielc.com/hplc-method-creatinine>

## Chromatogram



<b>Column:</b>	BIST™ B+
<b>Size:</b>	4.6 × 150mm, 5 µm
<b>Column part number:</b>	TBP-46.150.0510
<b>Mobile phase:</b>	MeCN – 90%
<b>Buffer:</b>	H <sub>2</sub> SO <sub>4</sub> –0.2%
<b>Detection:</b>	UV 200 nm
<b>Flow:</b>	1.0 mL/min

## Description

· HPLC Method for Analysis of Creatinine on BIST B+ by SIELC Technologies .

Creatine is a naturally occurring compound found in muscles and is used to produce energy during high-intensity exercise. It is synthesized in the body from amino acids and stored in muscles for quick energy release. You can find detailed UV spectra of Creatinine and information about its various lambda maxima by visiting the following link.

Creatinine can be retained and analyzed using the BIST B+ stationary phase column. The analysis utilizes an isocratic method with a simple mobile phase consisting of water and acetonitrile (MeCN) with a Sulfuric Acid buffer. Detection is performed using UV.

#### Method Parameters

<b>Mobile Phase</b>	MeCN – 85%
<b>Buffer</b>	H2SO4 – 0.2%
<b>Flow Rate</b>	1.0 ml/min
<b>Detection</b>	UV 200 nm
<b>Peak Retention Time</b>	9.09 min
<b>Class of Compounds</b>	Xanthines
<b>Analyzing Compounds</b>	Creatinine

#### HPLC Column Used

**BIST B+, 4.6 x 150 mm, 5 µm, 100 A, dual ended**

[Order this column at hplc-shop.de →](http://hplc-shop.de)