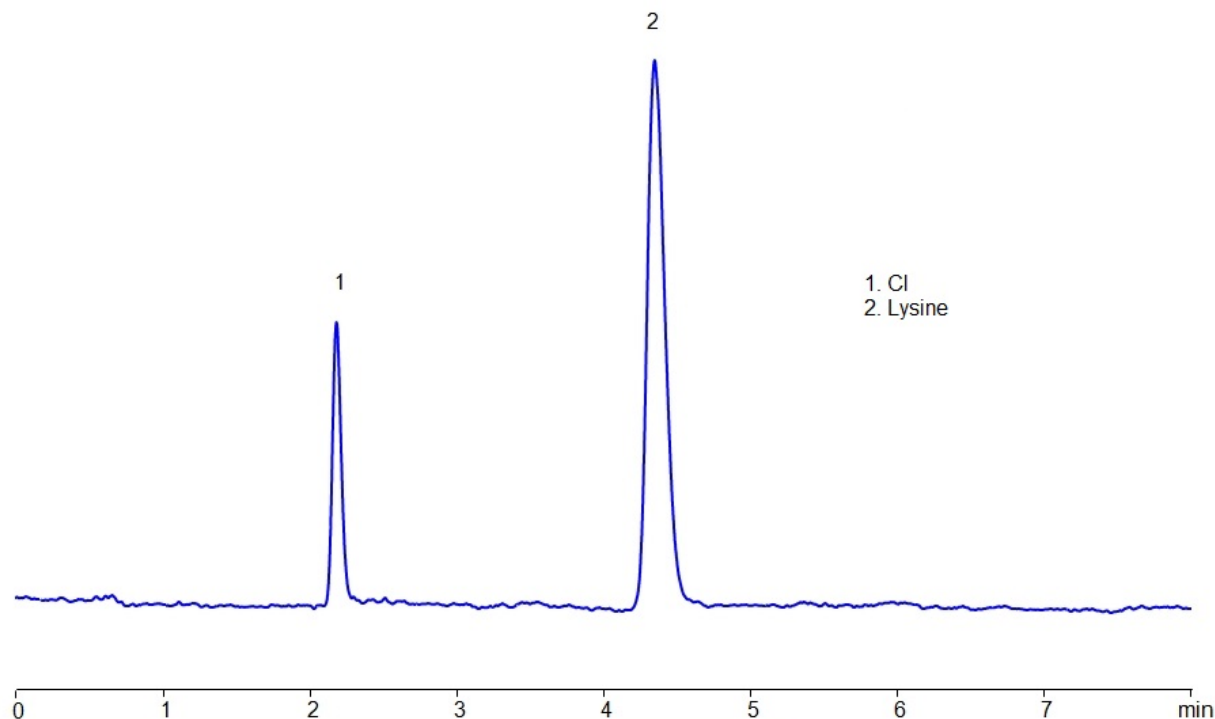


HPLC Determination of Lysine on Primesep 200 column in MS-compatible conditions

<https://sielc.com/hplc-determination-of-lysine>

Chromatogram



Column: Primesep 200
Column size: 4.6 × 150 mm, 5 µm
Mobile phase: MeCN – 10%
Buffer: AmFm pH 3.0 – 10 mM
Flow rate: 1 mL/min
Detection: CAD (Corona) (MS-compatible mobile phase)

Description

· High Performance Liquid Chromatography (HPLC) Method for Analysis of Lysine , D-Lysine

Lysine is an essential amino acid used in the synthesis of proteins. In biological conditions, it is a basic, charged molecule. Lysine can be retained on Primesep 200 mixed-mode column which has embedded weak acidic ion-pairing groups for retention of basic analytes in HPLC. The mobile phase consisting of acetonitrile (ACN) and water with ammonium formate (AmFm) makes this method analysis MS-compatible.

Method Parameters

Mobile Phase	MeCN/H ₂ O – 10/90%
Buffer	AmFM pH 3.0 – 10 mM
Flow Rate	1.0 ml/min
Detection	CAD (Corona), MS- compatible phase

Class of Compounds	Acid, Hydrophilic, Ionizable, Carboxylic acid, Drug, Amino Acid
Analyzing Compounds	Lysine,D-Lysine

HPLC Column Used

Primesep 200, 4.6 x 150 mm, 5 µm, 100 A, dual ended

[Order this column at hplc-shop.de →](http://hplc-shop.de)