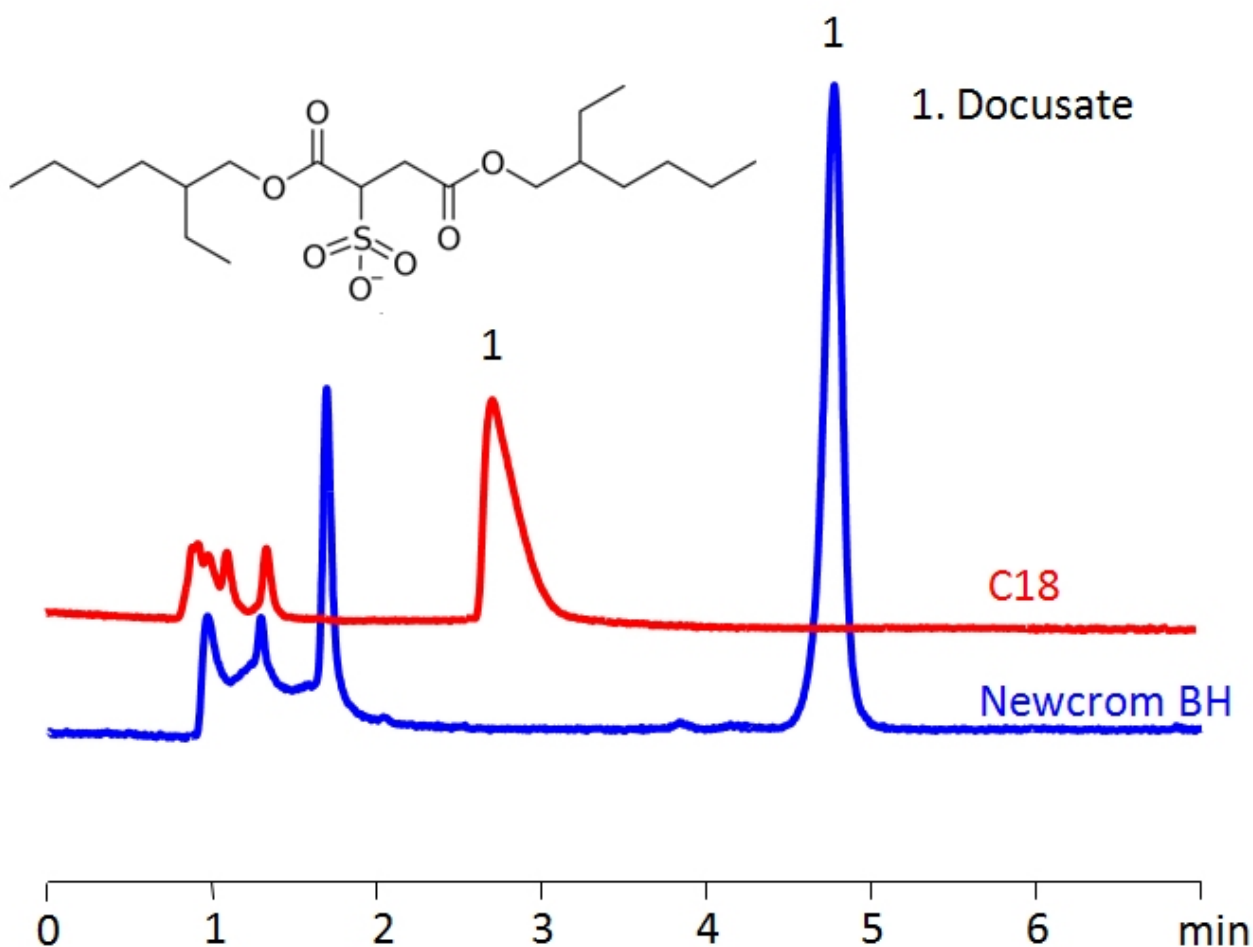


HPLC Determination of Docusate Sodium in Softgels on Newcrom BH Column

<https://sielc.com/hplc-determination-of-docusate>

Chromatogram



Column size:	3.2 × 100 mm, 3 μm
Column part number:	NBH-32.100.0310
Mobile phase:	MeCN/H ₂ O – 75/25%
Buffer:	H ₂ SO ₄ – 0.5%
Flow rate:	0.5 mL/min
Detection:	UV 200 nm

Description

· High Performance Liquid Chromatography (HPLC) Method for Analysis of Docusate.

Docusate is a laxative and stool softener with the chemical formula C₂₀H₃₇NaO₇S. Docusate retains water in the stool, thereby acting as a stool softener to facilitate stool passage. It is found in a variety of forms such as tablets, solution, and syrup over the counter, meaning it can be purchased without a prescription.

Docusate can be retained on the Newcrom BH mixed-mode column using an isocratic analytical method with a simple mobile phase of water, acetonitrile (MeCN, ACN), and sulphuric acid (H₂SO₄) buffer. The analysis method can be UV detected at 200 nm.

Method Parameters

Mobile Phase	MeCN/H ₂ O -75/25%
Buffer	H ₂ SO ₄ – 0.5%
Flow Rate	0.5 ml/min
Detection	UV, 200 nm
Class of Compounds	Drug
Analyzing Compounds	Docusate sodium, Dioctyl sulfosuccinic acid

HPLC Column Used

Newcrom BH, 3.2 x 100 mm, 3 µm, 100 A, dual ended

[Order this column at hplc-shop.de →](http://hplc-shop.de)