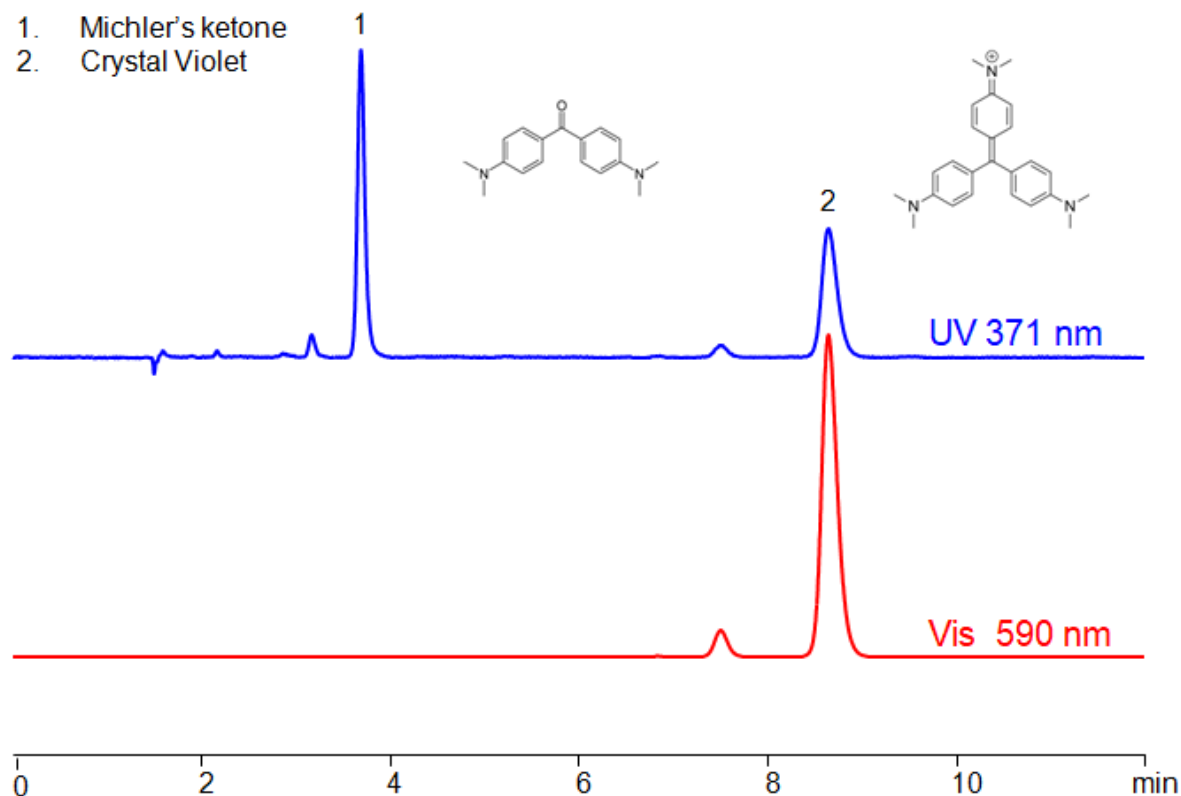


HPLC Method for Separation of Michler's ketone and Crystal Violet on Primesep 100 Column

<https://sielc.com/hplc-determination-of-crystal-violet-michlers-ketone>

Chromatogram



Column:	Primesep 100
Column size:	4.6 × 150 mm, 5 µm
Column part number:	100-46.150.0510
Mobile phase:	MeCN/H ₂ O – 80/20%
Buffer:	Gradient H ₂ SO ₄ - 0.2-0.4%, 10 min
Flow rate:	1.0 mL/min
Detection:	UV 371 nm Vis 590 nm

Description

· Separation type: Liquid Chromatography Mixed-mode

HPLC Method for Analysis of Michler's ketone , Crystal Violet on Primesep 100 Column by SIELC Technologies

Michler's ketone (4,4'-bis(dimethylamino)benzophenone) is a chemical compound used primarily in the synthesis of dyes and pigments. It has the chemical formula C₁₇H₁₇N₃O₂. The compound is named after the German chemist Viktor Michler, who first prepared it.

Michler's ketone is synthesized by condensing two equivalents of dimethylaniline with one equivalent of phosgene. The reaction involves the formation of a carbonyl group (C=O) that links two dimethylaniline moieties. The resulting structure features two aromatic rings (benzene rings) connected by a carbonyl group, with dimethylamino groups attached to each aromatic ring.

Michler's ketone is a valuable intermediate in the dye industry, where it is used to prepare various triarylmethane dyes, including Malachite Green, Methyl Violet, and Crystal Violet. The strong electron-donating properties of the dimethylamino groups make it a useful compound for synthesizing dyes with vibrant and stable colors.

Michler's ketone and Crystal Violet can be separated, retained, and analyzed on a Primesep 100 mixed-mode stationary phase column using an isocratic analytical method with a simple mobile phase of water, Acetonitrile (MeCN), and a sulfuric acid (H₂SO₄) buffer. This analysis method can be detected in the UV-Vis regime at 540, 590, and 200 nm.

Method Parameters

Mobile Phase	MeCN/H ₂ O – 80/20%
Buffer	Gr H ₃ PO ₄ – 0.2-0.4%, 10 min
Flow Rate	1.0 ml/min
Detection	UV 371, Vis 590 nm
Peak Retention Time	3.71, 8.57 min
Class of Compounds	Dyes
Analyzing Compounds	Michler's ketone, Crystal Violet

HPLC Column Used

Primesep 100, 4.6 x 150 mm, 5 µm, 100 Å, dual ended

[Order this column at hplc-shop.de](http://hplc-shop.de) →