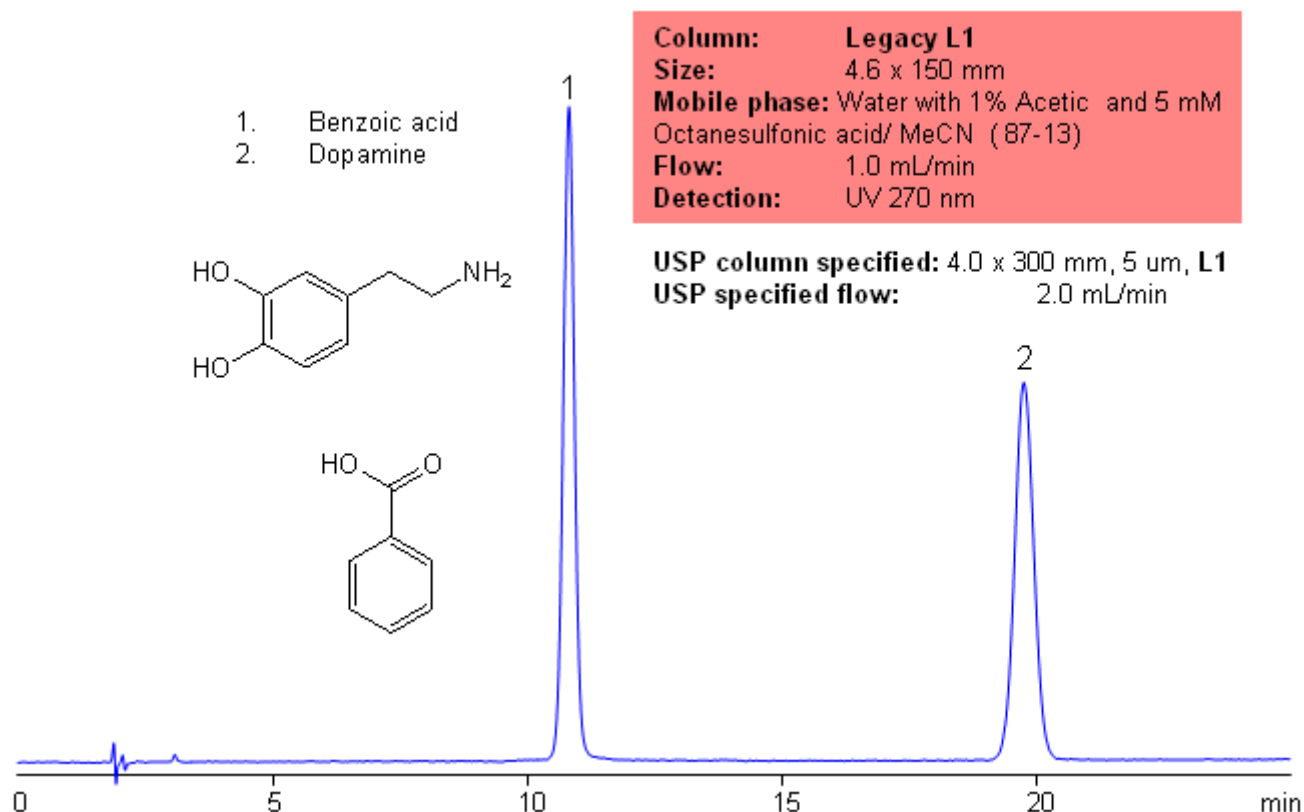


# USP Analysis of Dopamine Using a Legacy L1 column

<https://sielc.com/Application-USP-Analysis-of-Dopamine-Using-a-Legacy-L1-column>

## Chromatogram



## Description

Application Notes: Dopamine is a naturally occurring neurotransmitter found in the brain. Dopamine is a well studied compound because dopamine is an important neurotransmitter known to regulate many functions from pain response to behavior disorders. According to USP methods, dopamine hydrochloride contains not less than 98% and not more than 102% dopamine hydrochloride calculated on the dried basis. The USP HPLC method for the separation of hydrocortisone was developed on Legacy L1 column according to the US Pharmacopeia methodology. L1 classification is assigned to reversed-phase HPLC column containing C18 ligand. Support for the material is spherical silica gel with particles size 3-10 µm and pore size of 100-120Å. Resolution between critical pairs corresponds to rules and specifications of USP.

Application Columns: Legacy L1 C18 HPLC column · Application compounds: Dopamine hydrochloride · Mobile phase: Water with 1% acetic and 5mM octanesulfonic acid/MeCN · Detection technique: UV · Reference: USP35: NF30

## Method Parameters

Mobile Phase	Water with 1% Acetic and 5 mM Octanesulfonic acid/ MeCN ( 87-13)
Flow Rate	1.0 ml/min
Detection	UV, 270 nm
Class of Compounds	Drug, Hydrophilic, Ionizable, Hormone, Acid
Analyzing Compounds	Dopamine

#### HPLC Column Used

**Legacy L1, 4.6×150 mm, 5 µm, 100A**

[Order this column at hplc-shop.de →](http://hplc-shop.de)