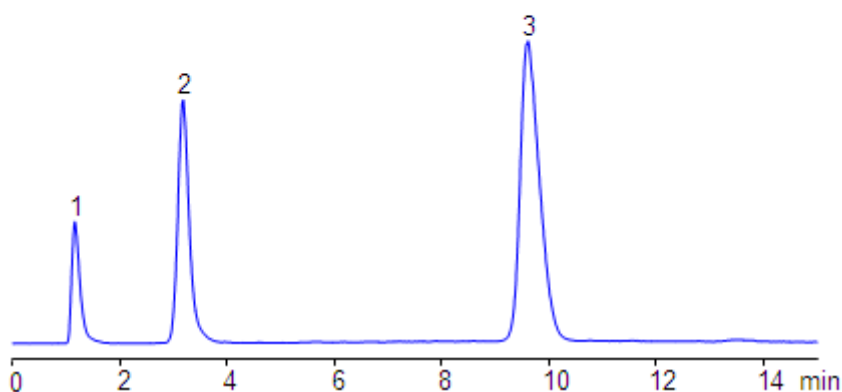


The Separation of Sodium, Dioctylsulfosuccinic Acid, and Sulfosuccinic Acid

<https://sielc.com/Application-The-Separation-of-Sodium-Dioctyl-Sulfosuccinic-Acid-and-Sulfosuccinic-Acid>

Chromatogram

Column:	Primesep B4	
Mobile phase:	MeCN gradient 50-10% in 10 min, AmFm pH 3.0 gradient 60-180 mM	
Flow:	0.5 mL/min	
Size:	3.2 x 50 mM	
Detection:	ELSD, 50C	
		1. Sodium 2. Dioctylsulfosuccinic Acid 3. Sulfosuccinic acid



Description

Sulfosuccinic acid and the corresponding dioctyl ester were separated on the Primesep B4 short carbon-chain anion-exchange column. Short carbon chain stationary phase allows to elute hydrophobic and acidic diester in reasonable time. No elution was observed on the mixed-mode columns with longer carbon chain analogs due to very strong hydrophobic and anion-exchange interaction.

Method Parameters

Mobile Phase	Gradient MeCN – 10 -50%, 10 min
Buffer	Gradient AmFm pH 3.0- 60-180 mM, 10 min
Flow Rate	1.0 ml/min
Detection	ELSD, 50C
Class of Compounds	Acid, Hydrophilic, Ionizable
Analyzing Compounds	Sodium, Dioctyl Sulfosuccinic acid, Sodium Docusate

HPLC Column Used

Primesep B4, 3.2x50 mm, 5 µm, 100A

[Order this column at hplc-shop.de →](#)