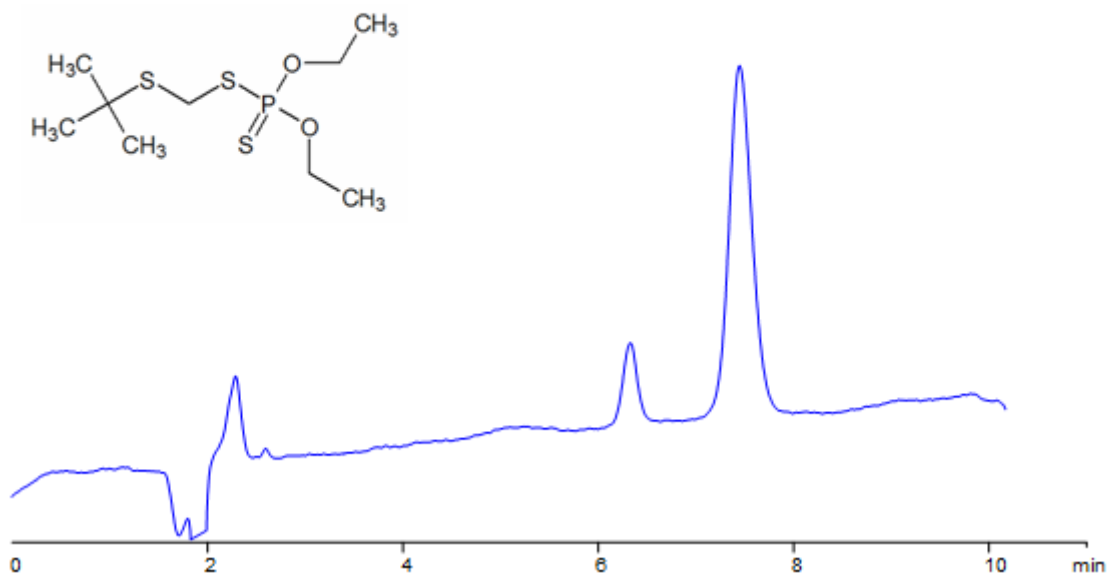


Terbufos Analysis on Obelisc R HPLC Column

<https://sielc.com/Application-Terbufos-Analysis-on-Obelisc-R-HPLC-Column>

Chromatogram

Column:	Obelisc R
Dimensions:	150 x 4.6 mm
Mobile Phase:	50% MeCN
Buffer:	40mM AmFm pH 3.0
Flow:	1.0 ml/min
Detection:	UV 250 nm



Description

Terbufos is an extremely toxic organophosphate insecticide and nematocide. Obelisc R was used to retain terbufos and separate it from impurities. Obelisc R contains embedded ionic and hydrophobic groups which can assist in fine tuning separations. Method is LC/MS compatible and can be used as a general approach for analyzing terbufos and other organophosphate insecticides.

Method Parameters

Mobile Phase	MeCN – 50%
Buffer	AmFm pH 3.0- 40 mM
Flow Rate	1.0 ml/min
Detection	UV, 250 nm
Class of Compounds	Insecticide, Herbicide, Fungicide, Hydrophobic, Ionizable
Analyzing Compounds	Terbufos

HPLC Column Used

Obelisc R, 4.6x150 mm, 5 µm, 100A

[Order this column at hplc-shop.de](http://hplc-shop.de) →