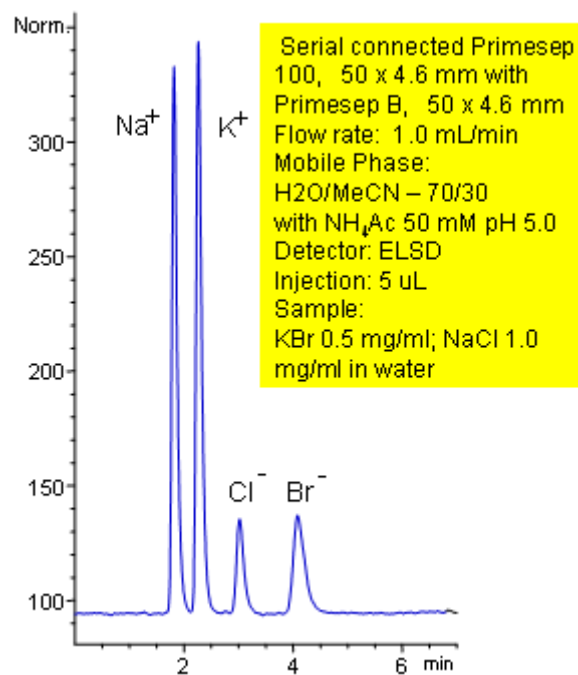


Simultaneous Separation of Cations and Anions

<https://sielc.com/Application-Simultaneous-Separation-of-Cations-and-Anions>

Chromatogram



Description

Primesep 100 and Primesep B columns connected in series allow the quantitation of sodium chloride and potassium bromide ions in one injection. The Primesep B column retains the chloride and bromide anions by anion exchange, and the Primesep 100 retains the sodium and potassium cations by cation exchange. The separation uses a mobile phase mixture of water, acetonitrile (MeCN, ACN) and trifluoroacetic acid (TFA) with evaporative light scattering detection (ELSD).

Method Parameters

Mobile Phase	MeCN/H ₂ O
Buffer	AmAc pH 5.0
Flow Rate	1.0 ml/min
Detection	ELSD 50C
Class of Compounds	Ions, Hydrophilic, Ionizable, Vitamin, Supplements
Analyzing Compounds	Sodium, Potassium, Bromide, Chloride

HPLC Column Used

Primesep 100, Primesep B , 4.6x50 mm, 5 µm, 100A