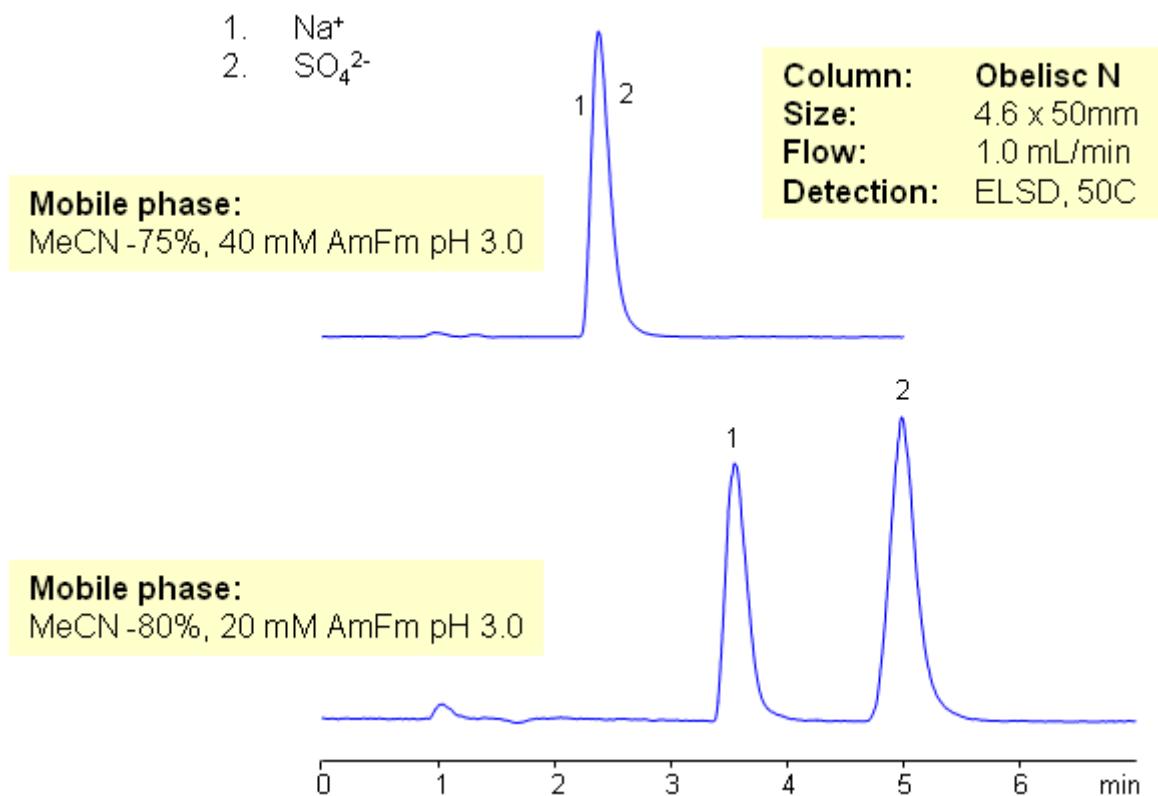


Simultaneous Determination of Sodium and Sulfate Ions on Obelisc N Mixed-mode HILIC Column

<https://sielc.com/Application-Simultaneous-Determination-of-Sodium-and-Sulfate-Ions-on-Obelisc-N-Mixed-mode-HILIC-Column>

Chromatogram



Description

Inorganic cations and anions are usually analyzed by two different methods – cation-exchange and anion-exchange. This requires development and validation of two methods. Both ions can be analyzed on mixed-mode HILIC column with ELSD detection. Both ions are retained by combination of HILIC and ion-exchange mechanism.

Method Parameters

Mobile Phase	MeCN/H ₂ O
Buffer	AmFm, pH 3.0
Flow Rate	1.0 ml/min
Detection	ELSD
Class of Compounds	Acid, Hydrophilic, Ionizable
Analyzing Compounds	Sodium, Sulfate Ions

HPLC Column Used

Obelisc N, 4.6x50 mm, 5 µm, 100A

[Order this column at hplc-shop.de](https://www.hplc-shop.de) →