

Simultaneous Analysis of Glucose, Sodium, Potassium and Calcium Ions

<https://sielc.com/Application-Simultaneous-Analysis-of-Glucose-Sodium-Potassium-and-Calcium-Ions>

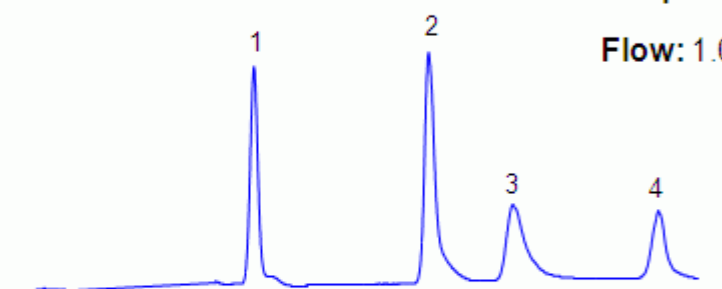
Chromatogram

1. Glucose
2. Sodium ion
3. Potassium ion
4. Calcium ion

Column: Primesep N
Size: 4.6 x 150mm
Flow: 1.0 mL/min
Detection: ELSD, 50°C

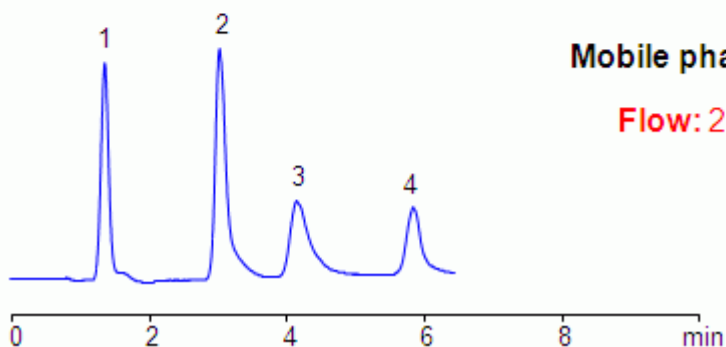
Mobile phase: MeCN -75%, 50 mM AmAc pH 4

Flow: 1.0 mL/min



Mobile phase: MeCN -75%, 10 mM AmAc pH 4

Flow: 2.0 mL/min



chr_304.gif

Description

Neutral sugar, monovalent and divalent cations were separated in HILIC/cation-exchange mode on a Primesep N mixed-mode column. Mobile phase is compatible with LC/MS and method can be used for analysis polar molecules in HILIC, cation-exchange or anion-exclusion modes.

Method Parameters

Mobile Phase	MeCN/H ₂ O
Buffer	AmAc pH 4.0
Flow Rate	1.0 ml/min
Detection	ELSD 50C

Class of Compounds	Ions, Hydrophilic, Ionizable
Analyzing Compounds	Potassium, Sodium, Calcium, Glucose

HPLC Column Used

Primesep N, 4.6×150 mm, 5 µm, 100A

[Order this column at hplc-shop.de →](http://hplc-shop.de)