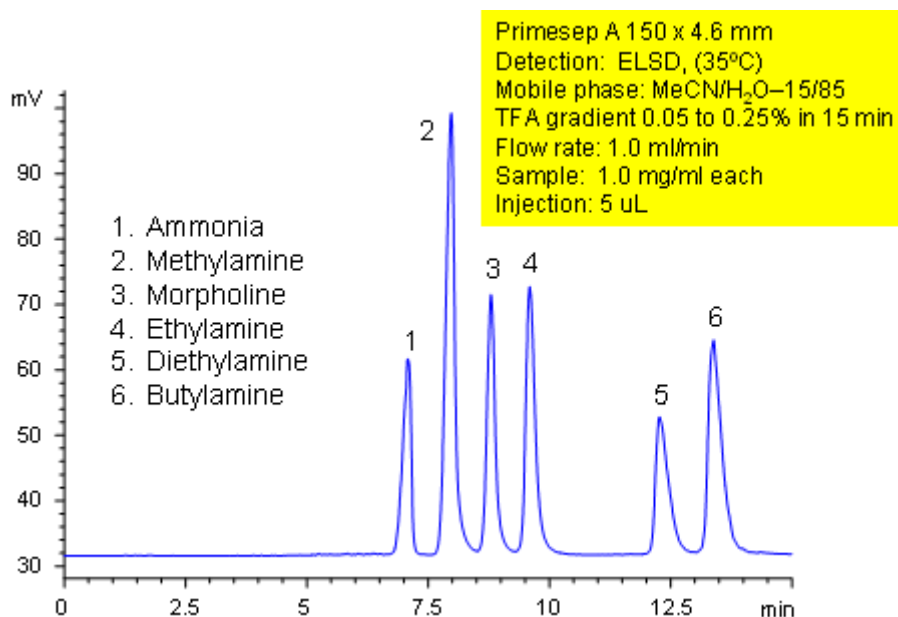


Separation of Simple Amines and Ammonia

<https://sielc.com/Application-Separation-of-Simple-Amines-and-Ammonia>

Chromatogram



Description

Primesep A separates ammonia and simple amines (butylamine, diethylamine, ethylamine, methylamine and morpholine) by cation exchange and reversed phase. Primesep A has an embedded strong anionic functional group which helps retain cations by polar and ion-exchange mechanisms. Excellent peak shape results with a mass spec compatible mobile phase of water, acetonitrile (MeCN, ACN) and trifluoroacetic acid (TFA) with evaporative light scattering detection (ELSD).