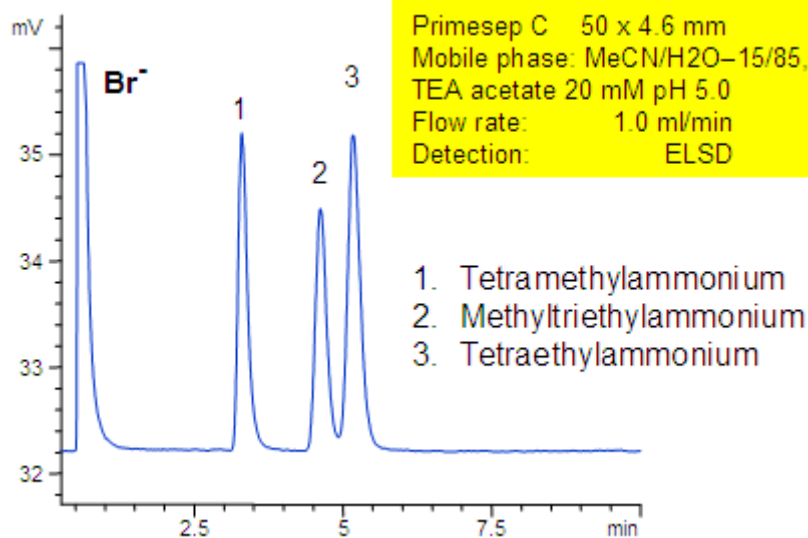


Separation of Quaternary Amines

<https://sielc.com/Application-Separation-of-Quaternary-Amines>

Chromatogram



Description

Primesep C separates a mixture of quaternary amines by a combination of cation exchange, complex formation, and hydrophobic interactions. Methyltriethylammonium, tetraethylammonium, and tetramethylammonium cations as well as bromide counter ion are separated on a short 50 mm column. The separation uses a mobile phase mixture of water, acetonitrile (MeCN, ACN) and triethylamine acetate with evaporative light scattering detection (ELSD).

Method Parameters

Mobile Phase	MeCN/H ₂ O
Buffer	TEA acetate
Flow Rate	1.0 ml/min
Detection	ELSD
Class of Compounds	Quaternary Amines, Ionizable, Hormone
Analyzing Compounds	Methyltriethylammonium, tetraethylammonium, Tetramethylammonium

HPLC Column Used

Primesep C, 4.6x50 mm

[Order this column at hplc-shop.de →](http://hplc-shop.de)