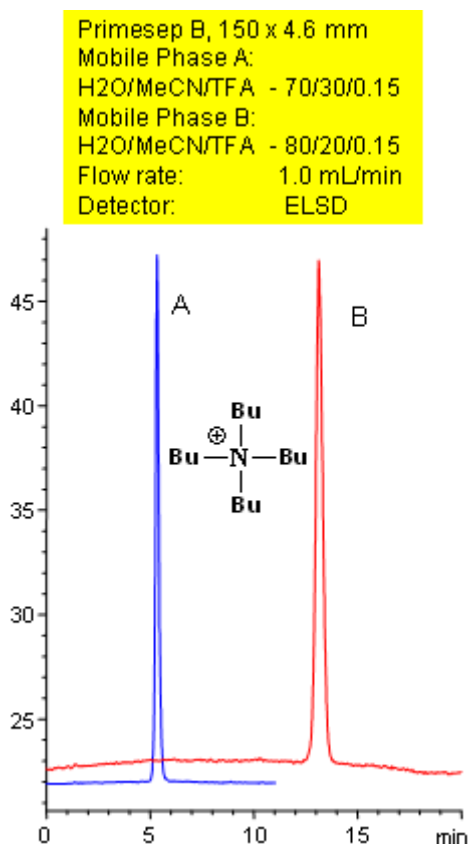


# Separation of Quaternary Amines by Reverse-Phase Mechanism

<https://sielc.com/Application-Separation-of-Quaternary-Amines-By-Reverse-Phase-Mechanism>

## Chromatogram



## Description

Primesep B separates quaternary amines, such as t-butylamine with symmetrical peak shape by a combination of reversed-phase and ion-exclusion mechanisms. The embedded basic functional group on the stationary phase shields the underlying silanols to prevent peak tailing. Excellent peak shape results with a mass spec compatible mobile phase of water, acetonitrile (MeCN, ACN) and trifluoroacetic acid (TFA) with evaporative light scattering detection (ELSD).

## Method Parameters

Mobile Phase	MeCN/H <sub>2</sub> O
Buffer	TFA
Flow Rate	1.0 ml/min
Detection	ELSD
Class of Compounds	Ions, Hydrophilic, Ionizable, Quaternary amines
Analyzing Compounds	t-butylamine

## HPLC Column Used

**Primesep B, 4.6x150 mm, 5 µm, 100A**

[Order this column at hplc-shop.de →](https://www.hplc-shop.de)