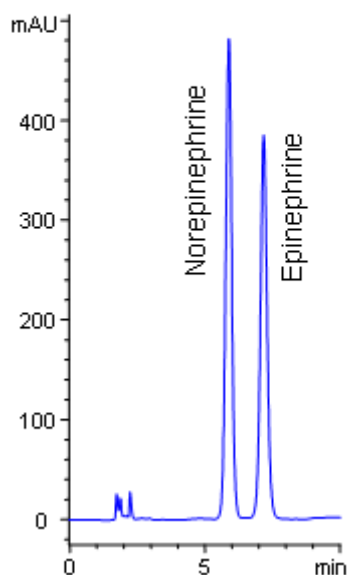


Separation of Epinephrine and Norepinephrine

<https://sielc.com/Application-Separation-of-Epinephrine-Norepinephrine>

Chromatogram

Primesep 200, 150 x 3.2 mm
Mobile Phase:
H₂O/MeCN/TFA - 90/10/0.05
Flow rate: 0.5 mL/min
Detector: UV 210 nm



Description

Primesep 200 separates the catecholamines, norepinephrine and epinephrine, less than 8 minutes. Norepinephrine and epinephrine are baseline resolved by a combination of reversed-phase, and ion-exchange mechanisms. Excellent peak shape results with a mass spec compatible mobile phase of water, acetonitrile (MeCN, ACN) and trifluoroacetic acid (TFA) with UV detection at 210 nm.

Method Parameters

Mobile Phase	MeCN/H ₂ O – 10/90%
Buffer	TFA – 0.05%
Flow Rate	1.0 ml/min
Detection	UV, 210 nm
Class of Compounds	Drug, Acid, Hydrophilic, Ionizable, Hormone
Analyzing Compounds	Norepinephrine, Epinephrine

HPLC Column Used

Primesep 200, 3.2x150 mm, 5 µm, 100A

[Order this column at hplc-shop.de →](http://hplc-shop.de)