

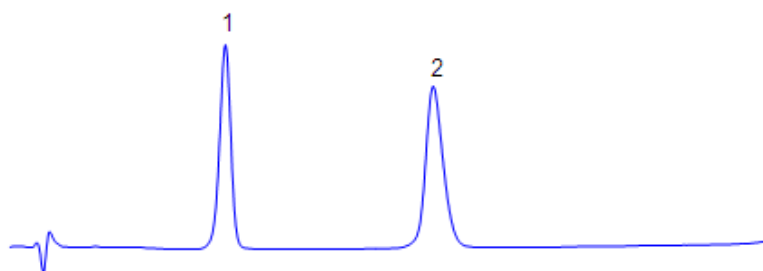
Separation of Bisphenol A and Bisphenol A Glucuronide

<https://sielc.com/Application-Separation-of-Bisphenol-A-and-Bisphenol-A-Glucuronide>

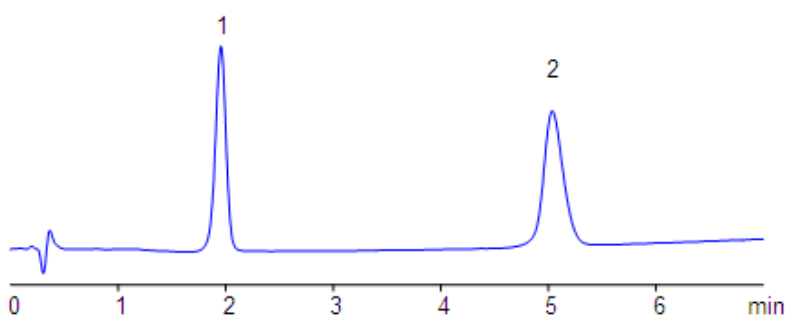
Chromatogram

1. Bisphenol A
2. Bisphenol A mono-b-D-glucuronide

Column: Primesep D
Flow: 1.0 mL/min
Size: 3.2 x 50 mM
Detection: UV 270 nm



Mobile phase: MeCN gradient from 30% to 65% in 7 min with 30 mM AmAc pH 4.0



Mobile phase: MeCN gradient from 30% to 75% in 7 min with 0.25% Formic acid

Method Parameters

Mobile Phase	Gradient MeCN – 30-65%, 7 min
Buffer	Formic Acid, AmAc
Flow Rate	1.0 ml/min
Detection	UV, 270 nm
Class of Compounds	Hydrophobic, Ionizable
Analyzing Compounds	Bisphenol A, Bisphenol A Glucuronide

HPLC Column Used

Primesep D, 3.2x50 mm, 5 µm, 100A

[Order this column at hplc-shop.de](http://hplc-shop.de) →