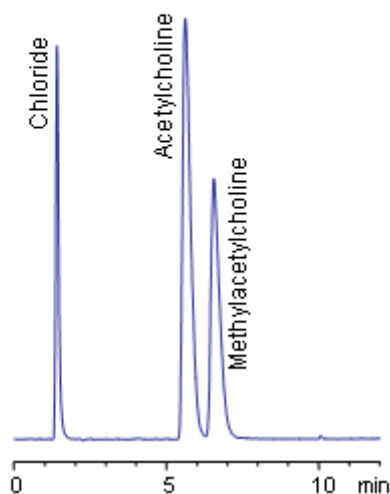


HPLC Separation of Acetylcholines

<https://sielc.com/Application-Separation-of-Acetylcholines>

Chromatogram

Column: Primesep C
150 x 3.2 mm
Flow rate: 0.5 mL/min.
Detection: ELSD
Mobile phase:
Water/MeCN=75/25 with
NH₄Acetate 20 mMol pH 4.1



Description

Primesep C separates acetylcholine and methylacetylcholine from their chloride counter ion with baseline resolution by a combination of cation exchange, complex formation, and hydrophobic interactions. The mass spec (LC/MS) compatible method uses a mobile phase of water, acetonitrile (MeCN, ACN) and ammonium acetate with evaporative light scattering detection (ELSD).

Method Parameters

Mobile Phase	MeCN/H ₂ O
Buffer	AmAc pH 4.1
Flow Rate	0.5 ml/min
Detection	ELSD
Class of Compounds	Drug
Analyzing Compounds	Acetylcholine, Methylacetylcholine

HPLC Column Used

Primesep C, 3.2x150 mm, 5 µm, 100A

[Order this column at hplc-shop.de →](http://hplc-shop.de)