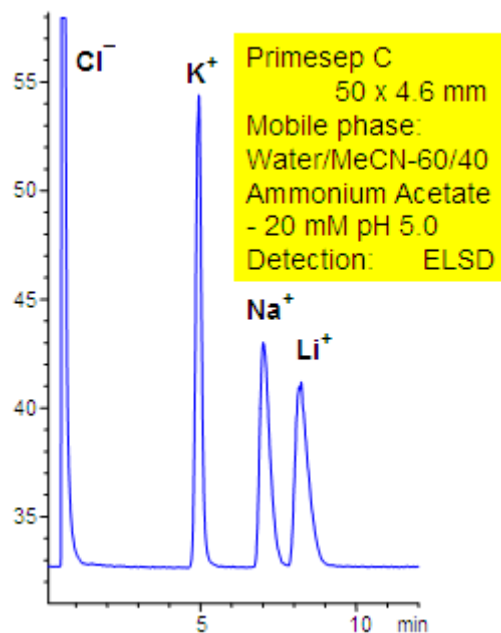


## Reverse Elution Order in Separation of Alkali Cation

<https://sielc.com/Application-Reverse-Elution-Order-in-Separation-of-Alkali-Cation>

### Chromatogram



### Description

Primesep C separates a mixture of inorganic cations, potassium, sodium, and lithium, by a combination of cation exchange and complex formation. The peak order is reversed on the Primesep C column compared to the order normally obtained on columns that rely on cation exchange alone. The mobile phase mixture of water, acetonitrile (MeCN, ACN) and ammonium acetate is compatible with UV and evaporative light scattering detection (ELSD).

### Method Parameters

Mobile Phase	MeCN/H <sub>2</sub> O
Buffer	AmAc
Flow Rate	1.0 ml/min
Detection	ELSD 50C
Class of Compounds	Ions, Hydrophilic, Ionizable, Vitamin, Supplements
Analyzing Compounds	Sodium, Potassium, Lithium, Chloride

### HPLC Column Used

**Primesep C, 4.6x50 mm, 5 µm, 100A**

[Order this column at hplc-shop.de →](http://hplc-shop.de)