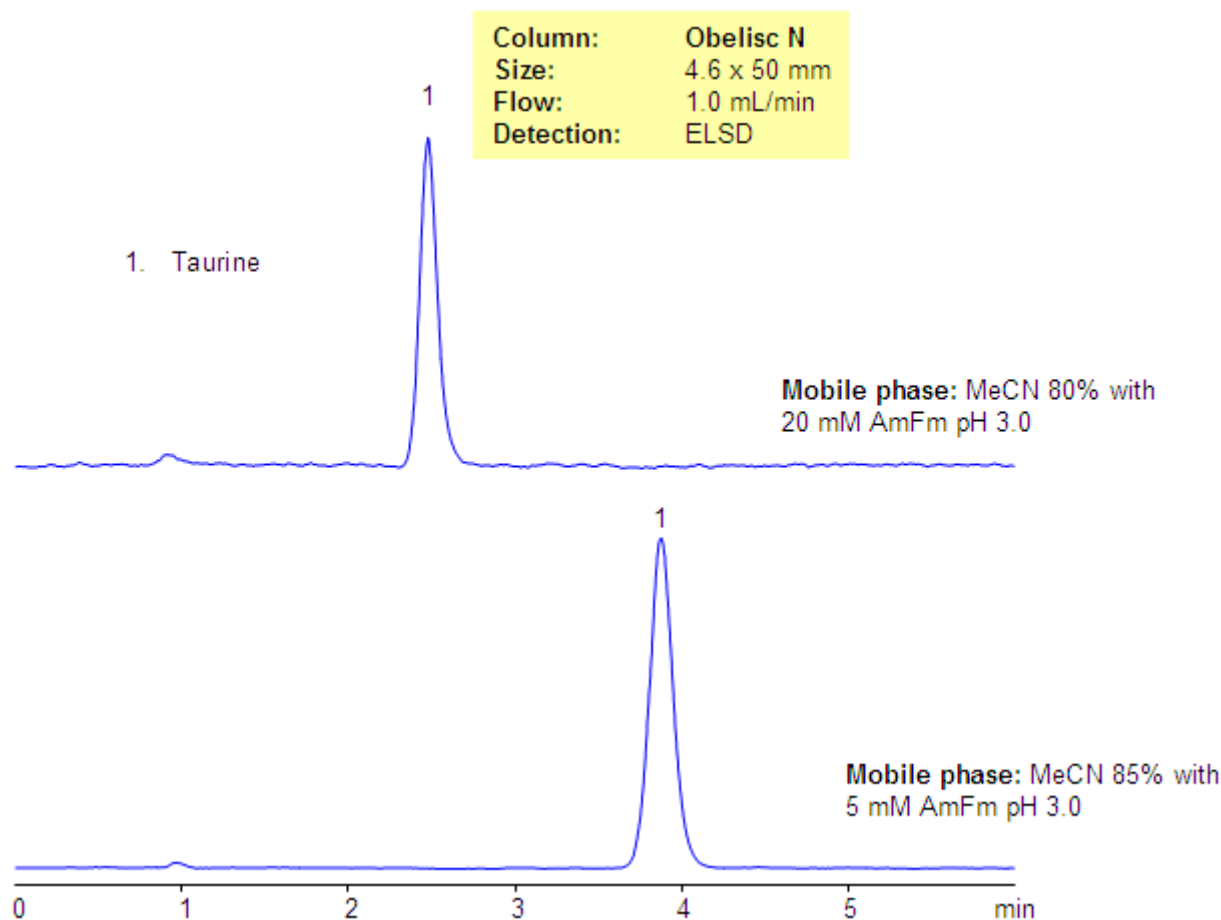


# Retention of Taurine on Obelisc N Column

<https://sielc.com/Application-Retention-of-Taurine-on-Obelisc-N-Column>

## Chromatogram



## Description

Taurine, or 2-aminoethanesulfonic acid, is a very polar zwitter-ionic compound. Taurine is used as an additive for various nutrition composition. The polar and zwitter-ionic nature of taurine prevent it from analysis by RP chromatography, in addition to that, taurine is not UV active and cannot be monitored by UV. The analytical method for analysis of taurine was developed on the Obelisc N HILIC/mixed-mode column. This method with some modifications can be used for the analysis of taurine in complex mixtures with a ELSD or a LC/MS detector.

## Method Parameters

<b>Mobile Phase</b>	MeCN
<b>Buffer</b>	AmFm pH 3.0
<b>Flow Rate</b>	1.0 ml/min
<b>Detection</b>	ELSD
<b>Class of Compounds</b>	Amino sulfonic acid, Hydrophilic, Ionizable, Vitamin, Supplements
<b>Analyzing Compounds</b>	Taurine

## HPLC Column Used

**Obelisc N, 4.6x50 mm, 5 µm, 100A**

[Order this column at hplc-shop.de](http://hplc-shop.de) →