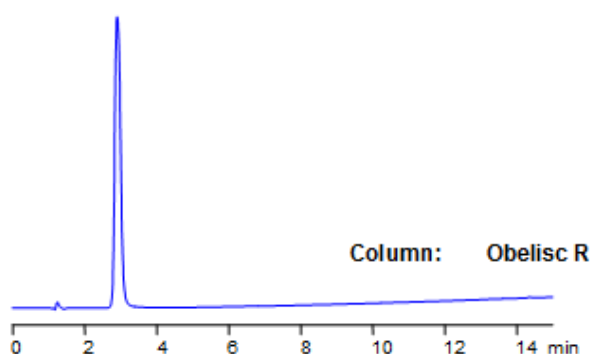
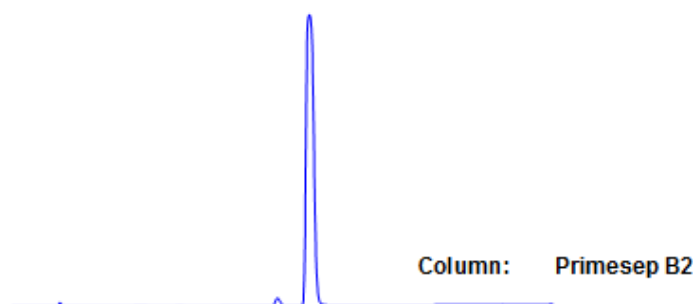


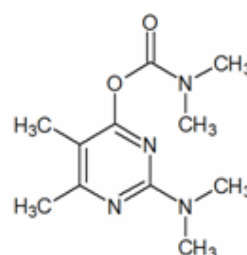
# Pirimicarb Analysis on Obelisc and Primesep Mixed-Mode HPLC Columns

<https://sielc.com/Application-Pirimicarb-Analysis-on-Obelisc-and-Primesep-Mixed-Mode-HPLC-Columns>

## Chromatogram



**Dimensions:** 150 x 2.1mm  
**Mobile Phase:** MeCN gradient from 10% to 70% in 15 min, 7 min hold.  
AmAc pH 4.5 from 20 mM to 50 mM in 15 min, 7 min hold  
**Flow:** 0.4 ml/min  
**Detection:** UV 250 nm



## Description

Pirimicarb is a carbamate pesticide used mostly to control aphids on non-food crops. The EURL included pirimicarb as a target pesticide for the EUPT-CF9. Obelisc R was used to retain pirimicarb and separate it from impurities. Primesep B2 and Obelisc R were used to retain pirimicarb and separate it from impurities. Primesep B2 contains embedded basic ion-pairing groups and Obelisc R contains embedded ionic and hydrophobic groups which can assist in fine tuning separations. Method is LC/MS compatible and can be used as a general approach for analyzing pirimicarb and dozens of other pesticides.

## Method Parameters

<b>Mobile Phase</b>	Gradient MeCN – 10-70%, 15 min, 7 min hold
<b>Buffer</b>	Gradient AmAc pH 4,5- 20-50 mM, 15 min, 7 min hold
<b>Flow Rate</b>	0.4 ml/min
<b>Detection</b>	UV, 250 nm
<b>Class of Compounds</b>	Insecticide, Herbicide, Fungicide, Hydrophobic, Ionizable
<b>Analyzing Compounds</b>	Pirimicarb

## HPLC Column Used

**Obelisc R, 2.1×150 mm, 5 µm, 100A**

[Order this column at hplc-shop.de →](http://hplc-shop.de)