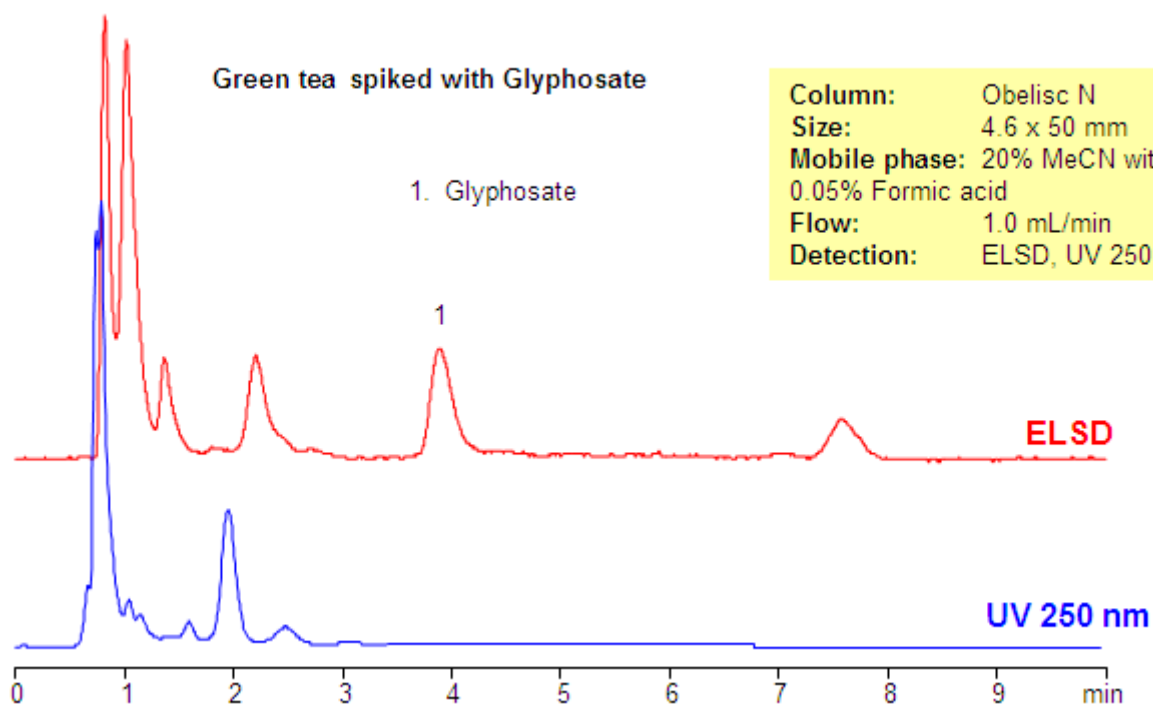


Method for Analysis of Glyphosate in Green Tea

https://sielc.com/Method_For_Analysis_of_Glyphosate_in_Green_Tea

Chromatogram



Column: Obelisc N
Size: 4.6 x 50 mm
Mobile phase: 20% MeCN with 0.05% Formic acid
Flow: 1.0 mL/min
Detection: ELSD, UV 250 nm

Method Parameters

Mobile Phase	MeCN/H ₂ O – 20/80%
Buffer	Formic acid – 0.05%
Flow Rate	1.0 ml/min
Detection	UV, 250 nm, ELSD
Class of Compounds	Herbicide, Hydrophilic, Ionizable
Analyzing Compounds	Glyphosate

HPLC Column Used

Obelisc N, 4.6x50 mm, 5 µm, 100A

[Order this column at hplc-shop.de →](https://www.hplc-shop.de)