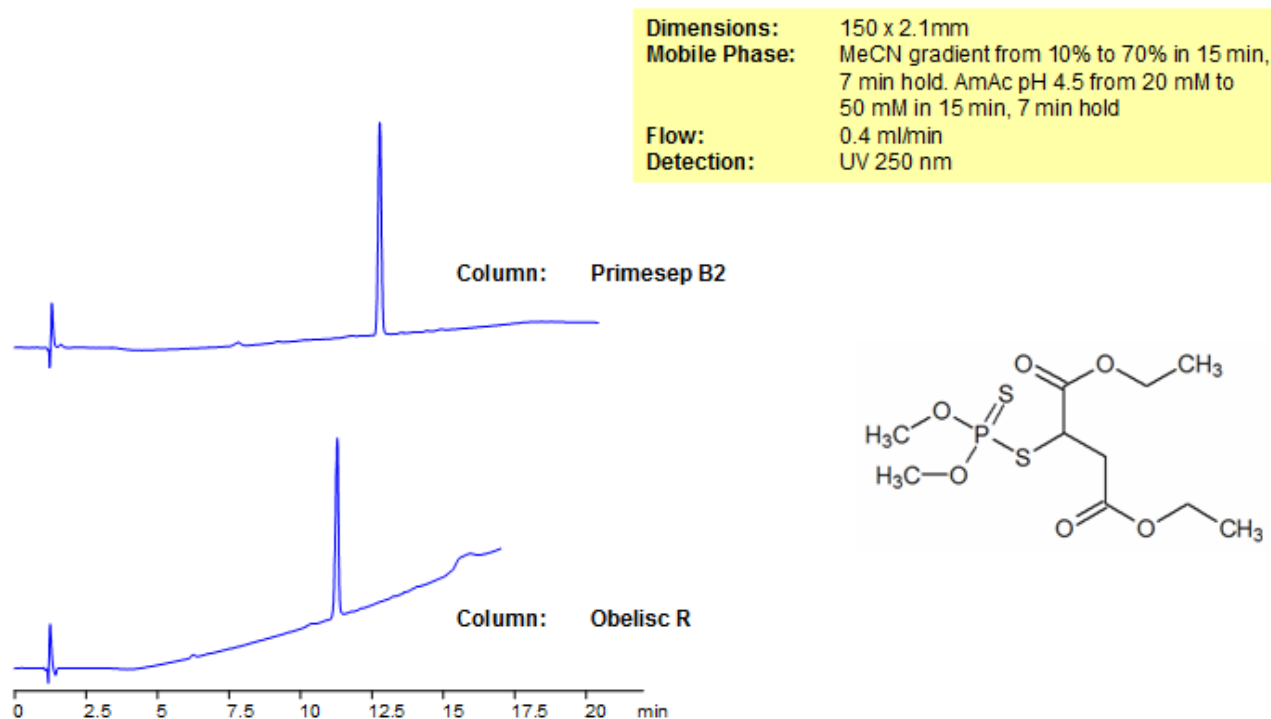


# Malathion Analysis on Obelisc and Primesep Mixed-Mode HPLC Column

<https://sielc.com/Application-Malathion-Analysis-on-Obelisc-and-Primesep-Mixed-Mode-HPLC-Column>

## Chromatogram



## Description

Malathion is the most widely used organophosphate pesticide used in the US. Used heavily in residential landscaping and in public recreation areas, malathion is often used for fruit fly and mosquito eradication. While not considered toxic to humans, malathion metabolizes to a far more toxic malaoxon. The EURL (European Union Reference Laboratory), included malathion as a target pesticide for the EUPT-CF9 a proficiency test for cereals and feedingstuff that require multi-residue methods. Primesep B2 and Obelisc R were used to retain malathion and separate it from impurities. Primesep B2 contains embedded basic ion-pairing groups and Obelisc R contains embedded ionic and hydrophobic groups which can assist in fine tuning separations. Method is LC/MS compatible and can be used as a general approach for analyzing malathion, other organophosphate insecticides, and dozens of other pesticides.

## Method Parameters

<b>Mobile Phase</b>	Gradient MeCN – 10-70%, 15 min, 7 min hold
<b>Buffer</b>	Gradient AmAc pH 4,5- 20-50 mM, 15 min, 7 min hold
<b>Flow Rate</b>	0.4 ml/min
<b>Detection</b>	UV, 250 nm
<b>Class of Compounds</b>	Insecticide, Herbicide, Fungicide, Hydrophobic, Ionizable
<b>Analyzing Compounds</b>	Malathion

## HPLC Column Used

**Obelisc R, 2.1×150 mm, 5 µm, 100A**

[Order this column at hplc-shop.de](https://www.hplc-shop.de) →