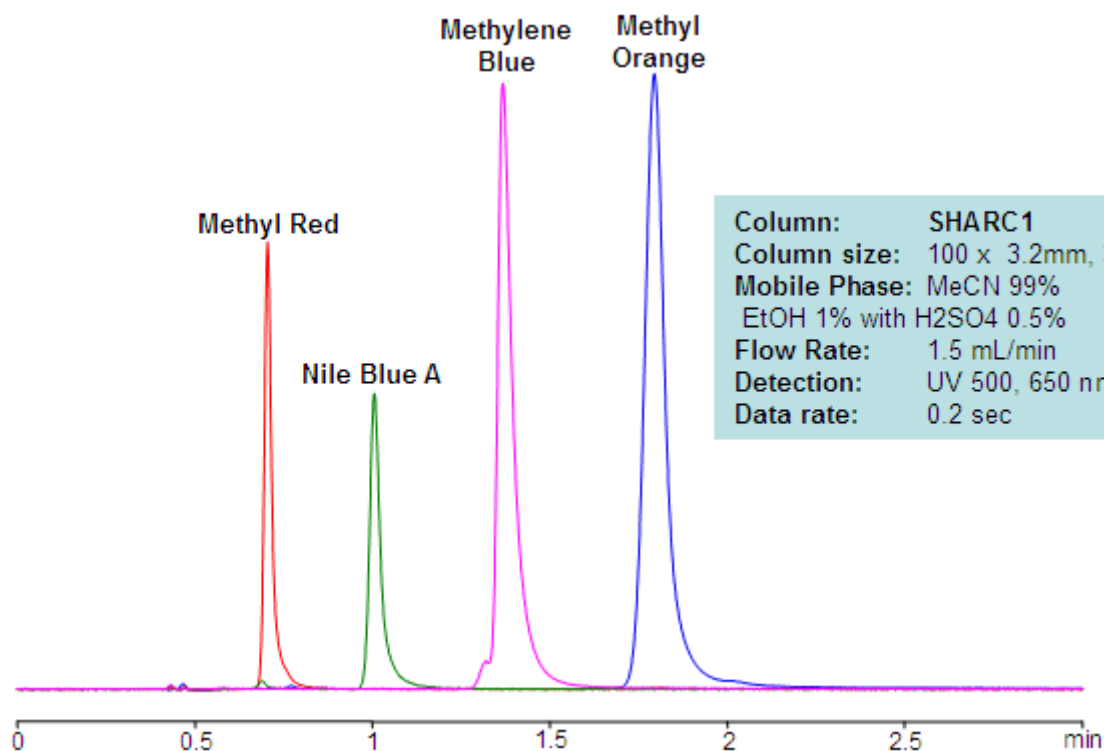


HPLC Dye Separation on SHARC1 Column

https://sielc.com/HPLC_Dye_Separation_on_SHARC1_Column

Chromatogram



Method Parameters

Mobile Phase	MeCN/EtOH – 99/1%
Buffer	H2SO4 – 0.5%
Flow Rate	1.5 ml/min
Detection	UV, 500, 650 nm
Class of Compounds	Dye, Hydrophilic, Ionizable
Analyzing Compounds	Methyl Red, Methyl Orange, Methylene Blue, Nile Blue A

HPLC Column Used

Sharc 1, 3.2x100 mm, 3 µm, 100A

[Order this column at hplc-shop.de →](http://hplc-shop.de)