

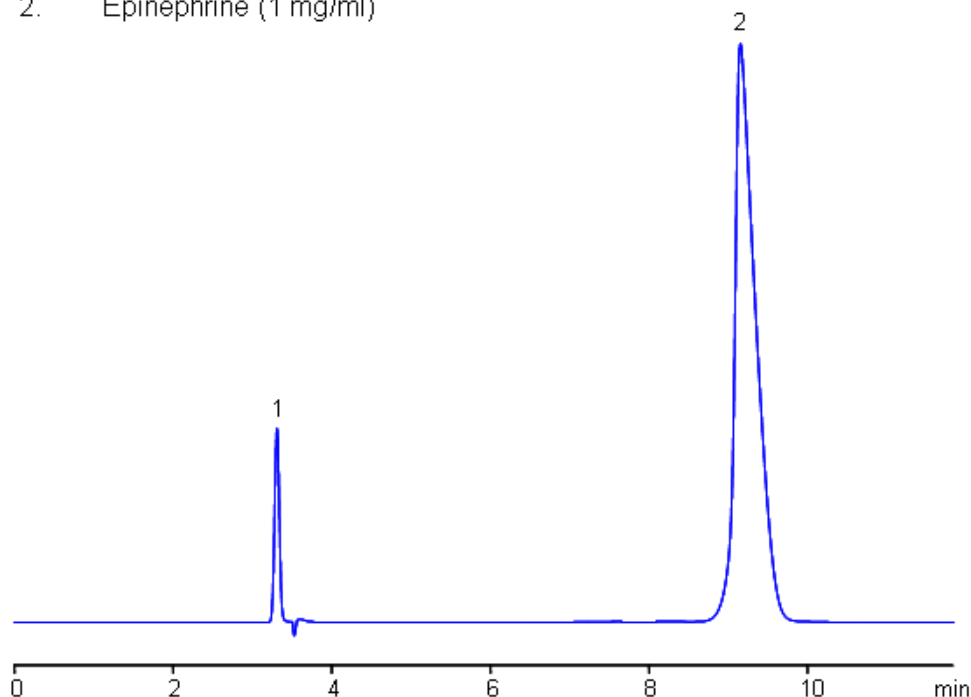
HPLC Analysis of Epinephrine and Epinephrine Sulfonate on Primesep AB Column

https://sielc.com/HPLC_Analysis_of_Epinephrine_and_Epinephrine_Sulfonate_on_Trimodal_Column

Chromatogram

Column: Primesep AB
Size: 4.6 x 250 mm
Mobile phase: MeCN 5% with 0.25% H₃PO₄
Flow: 1.0 mL/min
Detection: UV 280 nm

1. Epinephrine Sulfonate (0.1 mg/ml)
2. Epinephrine (1 mg/ml)



Description

Epinephrine and epinephrine sulfonate were analyzed using Primesep AB, a reverse-phase column with both acidic and basic embedded ion-pairing groups. This method is LC/MS compatible.

Method Parameters

Mobile Phase	MeCN/H ₂ O – 5/95%
Buffer	H ₃ PO ₄ – 0.25%
Flow Rate	1.0 ml/min
Detection	UV, 280 nm
Class of Compounds	Drug, Hydrophilic, Ionizable, Vitamin, Supplements
Analyzing Compounds	Epinephrine, Epinephrine Sulfonate

HPLC Column Used

Primesep AB, 4.6x250 mm, 5 µm, 100A

[Order this column at hplc-shop.de](http://hplc-shop.de) →