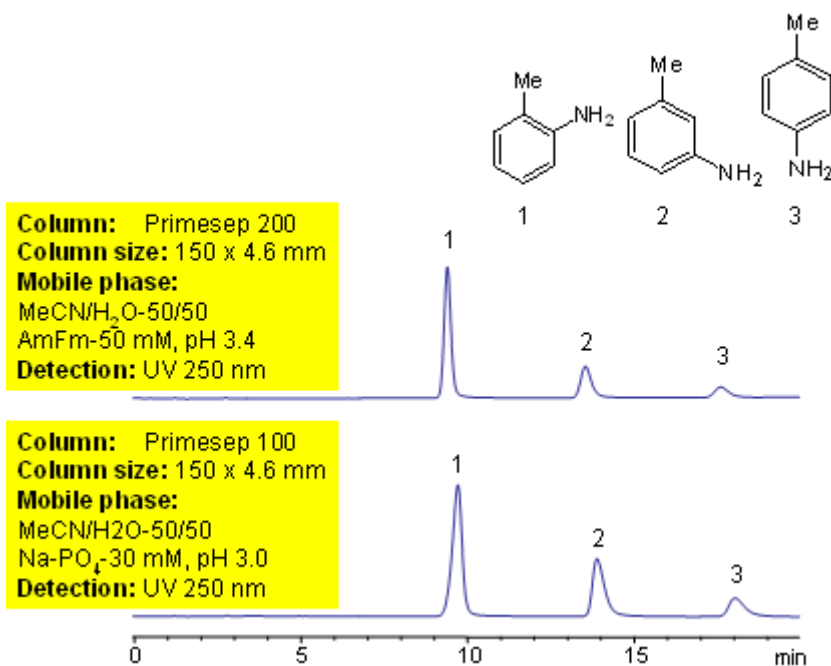


HPLC Method for Separation of Toluidine Isomers on Primesep 200 Column

<https://sielc.com/Application-HPLC-Separation-of-Toluidine-Isomers>

Chromatogram



Description

Toluidine isomers are based on toluene and differ whether the primary amine is ortho, meta or para to the methyl group. A Primesep 200 column with an ammonium formate buffer or a Primesep 100 column with sodium phosphate baseline resolves the three regioisomers. The HPLC separation uses a mobile phase of water, acetonitrile (MeCN, ACN), ammonium formate, or sodium phosphate and ultraviolet (UV) detection at 250 nm.

Column Diameter: 4.6 mm Column Length: 150 mm Particle Size: 5 µm Pore Size: 100 Å Column options: dual ended