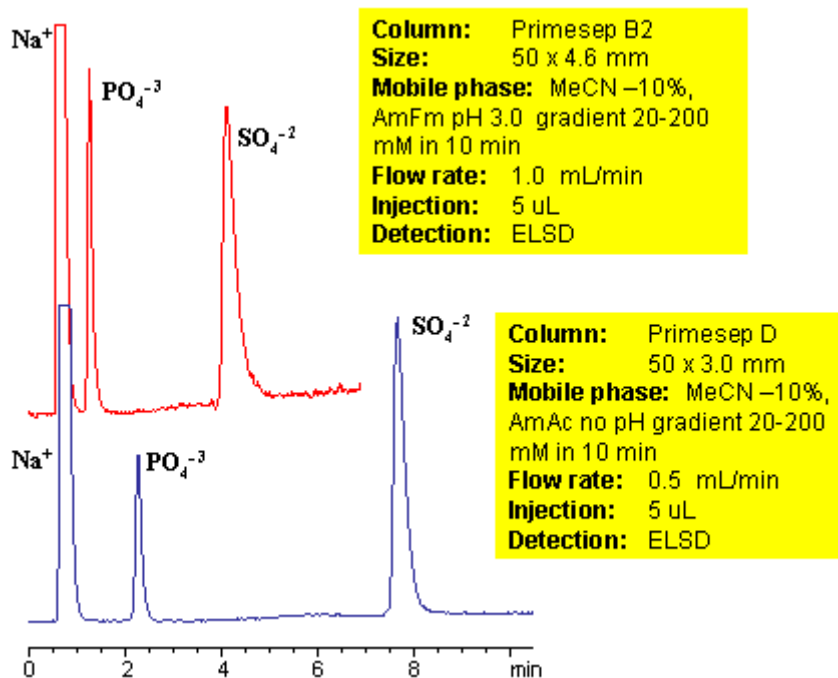


HPLC Separation of Sulfate and Phosphate Ions on Mixed-Mode HPLC

<https://sielc.com/Application-HPLC-Separation-of-Sulfate-and-Phosphate-Ions-on-Mixed-Mode-HPLC>

Chromatogram



Description

Sulfate and phosphate are separated on Primesep B2 and Primesep D column by anion-exchange mechanism. Because both sulfate and phosphate ions are not UV-active, ELSD is used to monitor separation of both anions. Method can be used to quantitate phosphate and sulfate in various pharmaceutical and chemical formulation, products and solution, drinking and ground water. Retention time is adjusted by increase or decrease of buffer concentrations. Two anions can be retained and separated on a very short column due to strong ion-exchange interaction. Method shows good reproducibility and versatility.

Method Parameters

Mobile Phase	MeCN/H2O
Buffer	AmFm pH 3.0
Flow Rate	1.0 ml/min
Detection	ELSD
Class of Compounds	Ions, Hydrophilic, Ionizable, Vitamin, Supplements
Analyzing Compounds	Sodium, Phosphate, Sulfate

HPLC Column Used

Primesep B2, 4.6x50 mm, 5 µm, 100A

[Order this column at hplc-shop.de →](#)