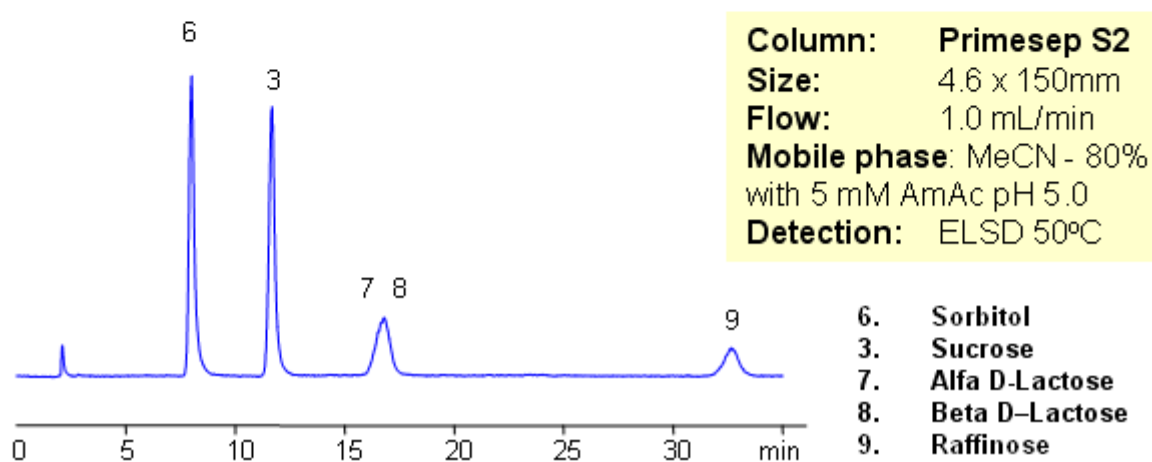
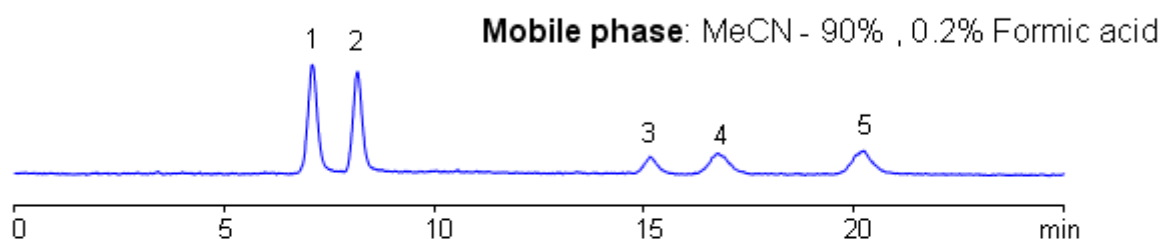
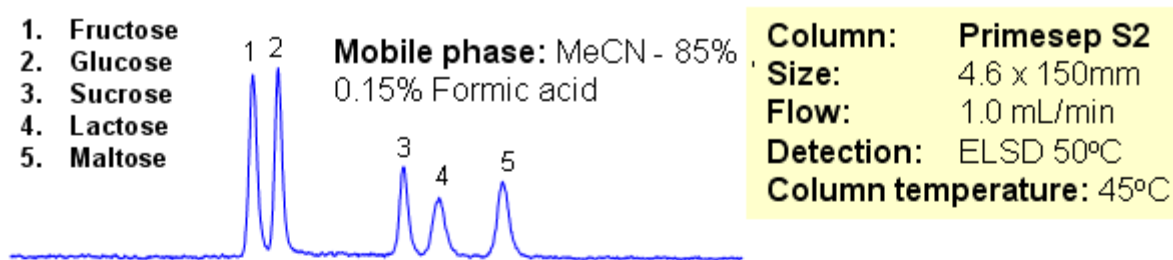


HPLC Separation of Sugars on Primesep S2 Column

<https://sielc.com/Application-HPLC-Separation-of-Sugars-on-Primesep-S2-Column>

Chromatogram



Description

Five sugars were separated on a Primesep S2 HILIC column with LC/MS compatible conditions. Various mobile phase produce different selectivity and separation. Method can be used as alternative to aminopropyl column. Primesep S2 column is stable and does not undergo rapid hydrolysis like aminopropyl columns.

Method Parameters

Mobile Phase	MeCN/H2O
Buffer	AmAc pH 5.0, Formic Acid
Flow Rate	1.0 ml/min
Detection	ELSD 50C

Class of Compounds

Drug, Acid, Monocarboxylic acid, Hydrophilic, Ionizable, Hormone

Analyzing CompoundsFructose, Glucose, Sucrose, Lactose, Maltose, Sorbitol, Sucrose, Alfa
D-Lactose, Beta D-Lactose, Raffinose**HPLC Column Used****Primesep S2, 4.6×150 mm, 5 µm, 100A**[Order this column at hplc-shop.de →](http://hplc-shop.de)