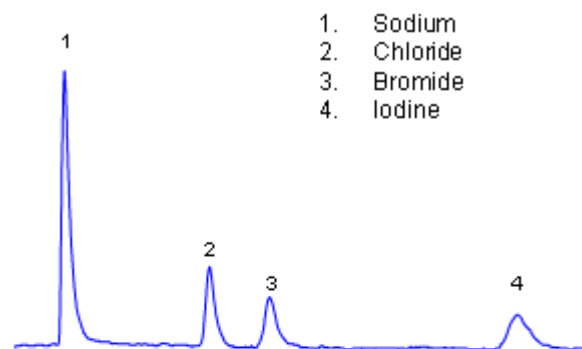


# HPLC Separation of Sodium, Chloride, Bromide, and Iodine

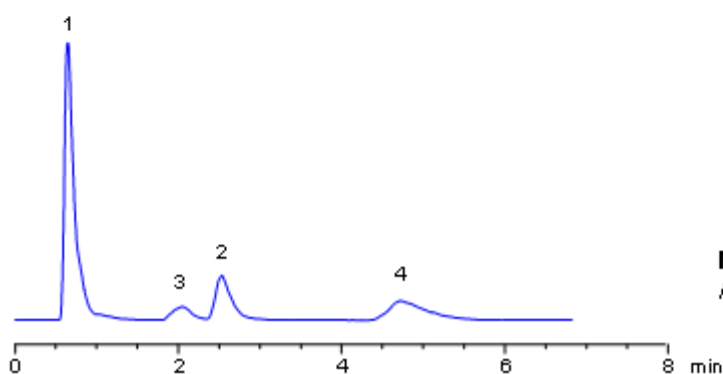
<https://sielc.com/Application-HPLC-Separation-of-Sodium-Chloride-Bromide-and-Iodine>

## Chromatogram



**Column:** Primesep SB  
**Column size:** 50x 4.6 mm  
**Flow rate:** 1.0 mL/min  
**Detection:** ELSD

**Mobile phase:**  
ACN-50%, AmFm 25 mM pH 3.5



**Mobile phase:**  
ACN-20%, AmFm 10 mM pH 3.5

## Description

Halide ions are usually analyzed by ion-chromatography with a conductivity detector. Mixed-mode chromatography in combination with ELSD is offering a valuable alternative to ion-chromatography with conductivity detection. Chloride, bromide and iodide were separated on a Primesep SB mixed-mode anion-exchange column. Mobile phase is compatible with ELSD and LC/MS.

## Method Parameters

Mobile Phase	MeCN/H2O
Buffer	AmFm
Flow Rate	1.0 ml/min
Detection	ELSD
Class of Compounds	Hydrophilic, Ions
Analyzing Compounds	Chloride, Sodium, Bromide, Iodine

## HPLC Column Used

**Primesep SB, 4.6x50 mm, 5 µm, 100A**

[Order this column at hplc-shop.de →](#)