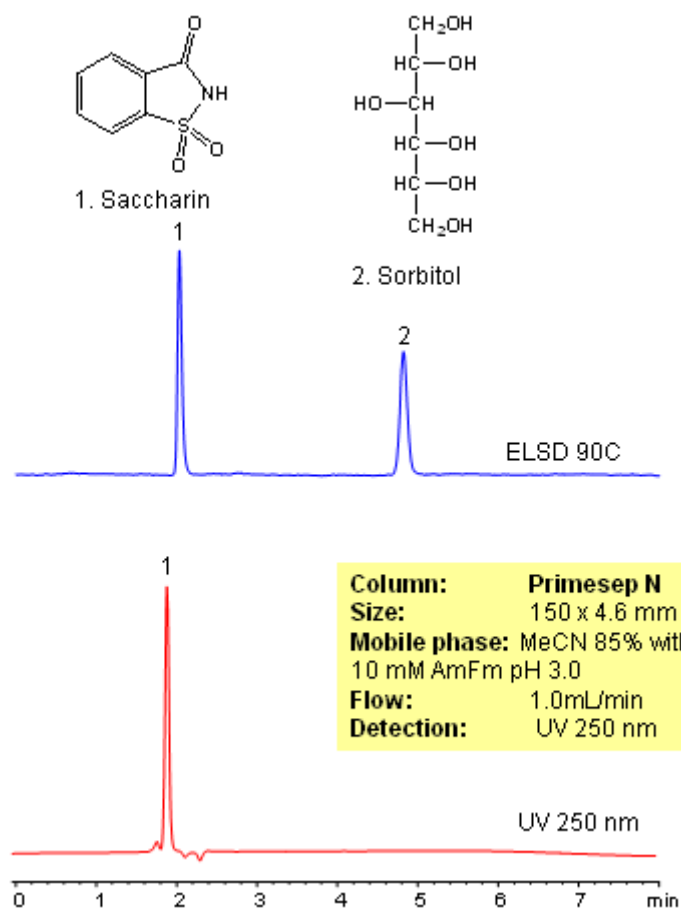


HPLC Separation of Saccharin and Sorbitol

<https://sielc.com/Application-HPLC-Separation-of-Saccharin-and-Sorbitol>

Chromatogram



Description

Sorbitol and saccharin are two sugar substitutes used in food and drinks. Separation of sorbitol and saccharin was achieved on a Primesep N HILIC column using acetonitrile/water with ammonium formate. Compounds were monitored by combination of UV and ELSD. Method is compatible with LC/MS detection.