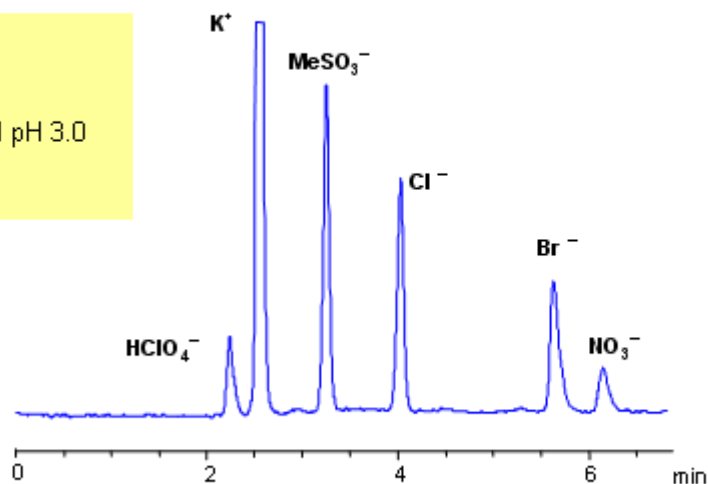


HPLC Separation of Potassium, Perchlorate, Methanesulfonic, Chloride, Bromide, and Nitrate Ions on Obelisc N

<https://sielc.com/Application-HPLC-Separation-of-Potassium-Perchlorate-Methanesulfonic-Chloride-Bromide-and-Nitrate-Ions-on-Obelisc-N>

Chromatogram

Column: Obelisc N
Size: 150 x 4.6 mm
Mobile phase: MeCN 30%,
AmFm 40 mM pH 3.0
Flow: 1.0 mL/min
Detection: ELSD 50C



Description

Ion chromatography is usually used for analysis of hydrophilic organic and inorganic ions. Same separation can be achieved on HILIC/mixed-mode Obelisc N HPLC columns. Obelisc N HPLC columns have very polar groups on their surface: one of the groups is basic and the other acidic. In case of low organic concentration, two groups are connected by hydrophilic linker. Obelisc N column can be used as cation-exchange and anion-exchange column. This allows to separate positively and negatively charged molecules in one run. Five anions (chloride, bromide, methanesulfonate, nitrate and perchlorate) along with one cation (sodium) were separated in one run. Method is compatible with ELSD, CAD and LC/MS and can be used for analysis of various hydrophilic and hydrophobic cations and anions in one HPLC run.

Method Parameters

Mobile Phase	MeCN/H ₂ O
Buffer	AmFm
Flow Rate	1.0 ml/min
Detection	ELSD
Class of Compounds	Hydrophilic, Ions
Analyzing Compounds	Chloride, Nitrate, Chlorate, Bromide, Potassium

HPLC Column Used

Obelisc N, 4.6x150 mm, 5 µm, 100A

[Order this column at hplc-shop.de](http://hplc-shop.de) →