

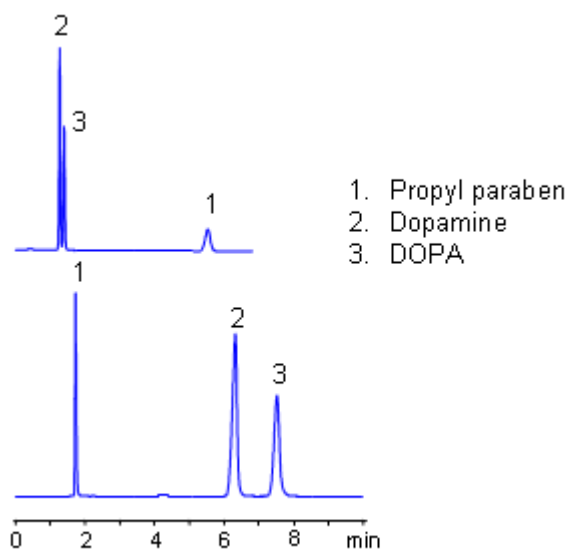
HPLC Separation of Polar and Hydrophobic Drugs on Obelisc R

<https://sielc.com/Application-HPLC-Separation-of-Polar-and-Hydrophobic-Drugs-on-Obelisc-R-and-N>

Chromatogram

Column: Obelisc R
Size: 150 x 4.6 mm
Mobile phase: MeCN 40%, 0.1% H₃PO₄
Flow: 1.0 mL/min
Detection: UV 220 nm

Column: Obelisc N
Size: 150 x 4.6 mm
Mobile phase: MeCN 80%, 0.1% H₃PO₄
Flow: 1.0 mL/min
Detection: UV 220 nm



Method Parameters

Mobile Phase	MeCN/H ₂ O – 40/60%
Buffer	H ₃ PO ₄ – 0.1%
Flow Rate	1.0 ml/min
Detection	UV, 220 nm
Class of Compounds	Drug, Acid, Preservative, Hydrophilic, Ionizable, Hormone
Analyzing Compounds	Propyl paraben, Dopamine, DOPA

HPLC Column Used

Obelisc R, 4.6 x 150 mm, 5 µm, 100 A, dual ended

[Order this column at hplc-shop.de →](#)