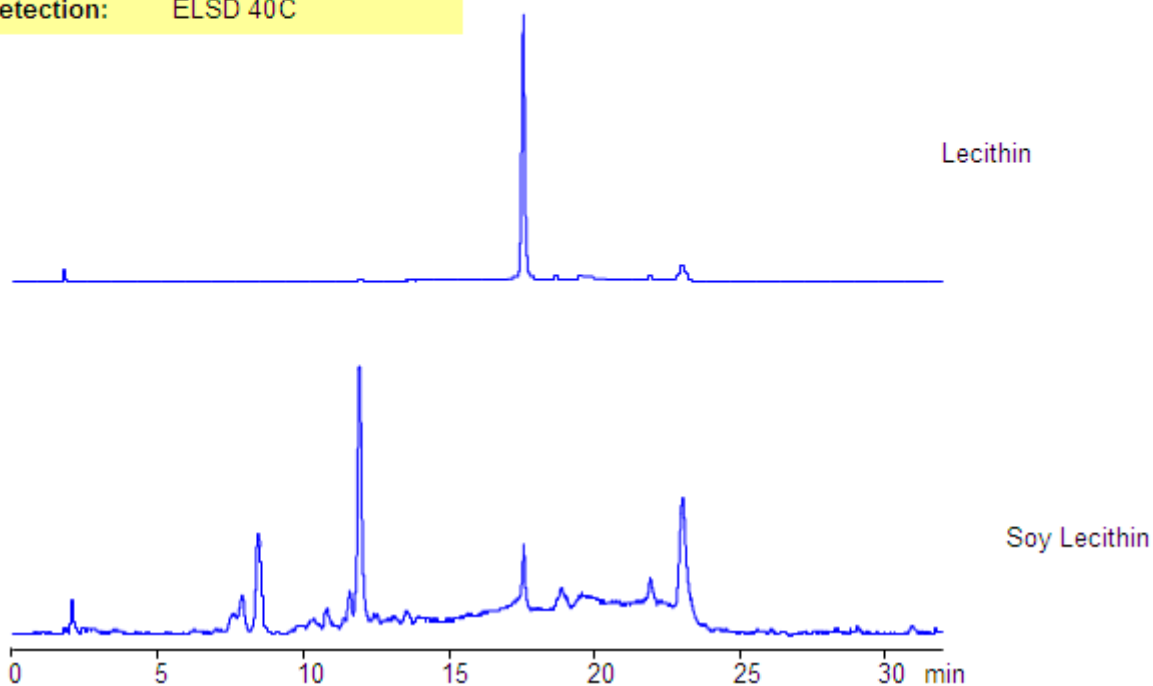


HPLC Separation of Lecithin and Soy lecithin on Primesep N Column

<https://sielc.com/Application-HPLC-Separation-of-Lecithin-and-Soy-Lecithin-on-Primesep-N-Column>

Chromatogram

Column: Primesep N
Size: 4.6 x 150 mm
Mobile phase: MeCN gradient 92-75% in 20 min, AmFm pH 3.0 gradient from 8 mM to 20 mM in 20 min
Flow: 1.0 mL/min
Detection: ELSD 40C



Description

Lecithin is a naturally occurring compound composed of phosphoric acid, choline, fatty acids, glycerol, glycolipids, triglycerides and phospholipids.

Method Parameters

Mobile Phase	Gradient MeCN 92-75%, 20 min
Buffer	Gradient AmFm pH 3.0- 8-20 mM, 20 min
Flow Rate	1.0 ml/min
Detection	ELSD, 40C
Class of Compounds	Aminoacid, Hydrophilic, Ionizable, Vitamin, Supplements
Analyzing Compounds	Lecithin

HPLC Column Used

Primesep N, 4.6x150 mm, 5 µm, 100A

[Order this column at hplc-shop.de](http://hplc-shop.de) →