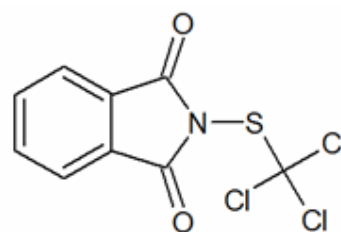
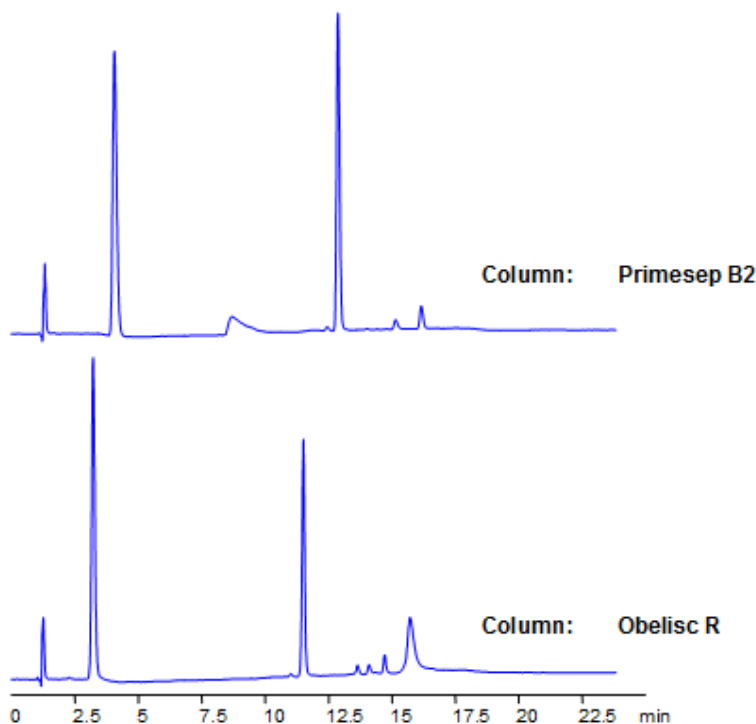


HPLC Separation of Folpet on Obelisc and Primesep Mixed-Mode Primesep B2 Column

<https://sielc.com/Application-HPLC-Separation-of-Folpet-on-Obelisc-and-Primesep-Mixed-Mode-Columns>

Chromatogram

Dimensions: 150 x 2.1mm
Mobile Phase: MeCN gradient from 10% to 70% in 15 min, 7 min hold. AmAc pH 4.5 from 20 mM to 50 mM in 15 min, 7 min hold
Flow: 0.4 ml/min
Detection: UV 250 nm



Description

High Performance Liquid Chromatography (HPLC) Method for Analysis of Folpet . Folpet is a nonsystemic fungicide which is used to prevent apple scab, cherry leaf spot, rose black spot, and rose mildew. A method for folpet was provided by the EURL-SRM, a proficiency test for single residue methods developed by the European Union Reference Laboratory. Folpet was retained and separated from impurities with Obelisc R and Primesep B2 columns. Primesep B2 contains embedded basic ion-pairing groups and Obelisc R contains embedded ionic and hydrophobic groups which can assist in fine tuning separations. Method can be used for dozens of other pesticides and is LC/MS compatible.

High Performance Liquid Chromatography (HPLC) Method for Analysis of Folpet .

Folpet is a nonsystemic fungicide which is used to prevent apple scab, cherry leaf spot, rose black spot, and rose mildew. A method for folpet was provided by the EURL-SRM, a proficiency test for single residue methods developed by the European Union Reference Laboratory. Folpet was retained and separated from impurities with Obelisc R and Primesep B2 columns. Primesep B2 contains embedded basic ion-pairing groups and Obelisc R contains embedded ionic and hydrophobic groups which can assist in fine tuning separations. Method can be used for dozens of other pesticides and is LC/MS compatible.

Method Parameters

Mobile Phase

Gradient MeCN – 10-70%, 15 min, 7 min hold

Buffer

Gradient AmAc pH 4,5- 20-50 mM, 15 min, 7 min hold

Flow Rate	0.4 ml/min
Detection	UV, 250 nm
Class of Compounds	Insecticide, Herbicide, Fungicide, Hydrophobic, Ionizable
Analyzing Compounds	Folpet

HPLC Column Used

Primesep B2, 2.1 x 150 mm, 5 µm, 100 A, dual ended

[Order this column at hplc-shop.de](http://hplc-shop.de) →