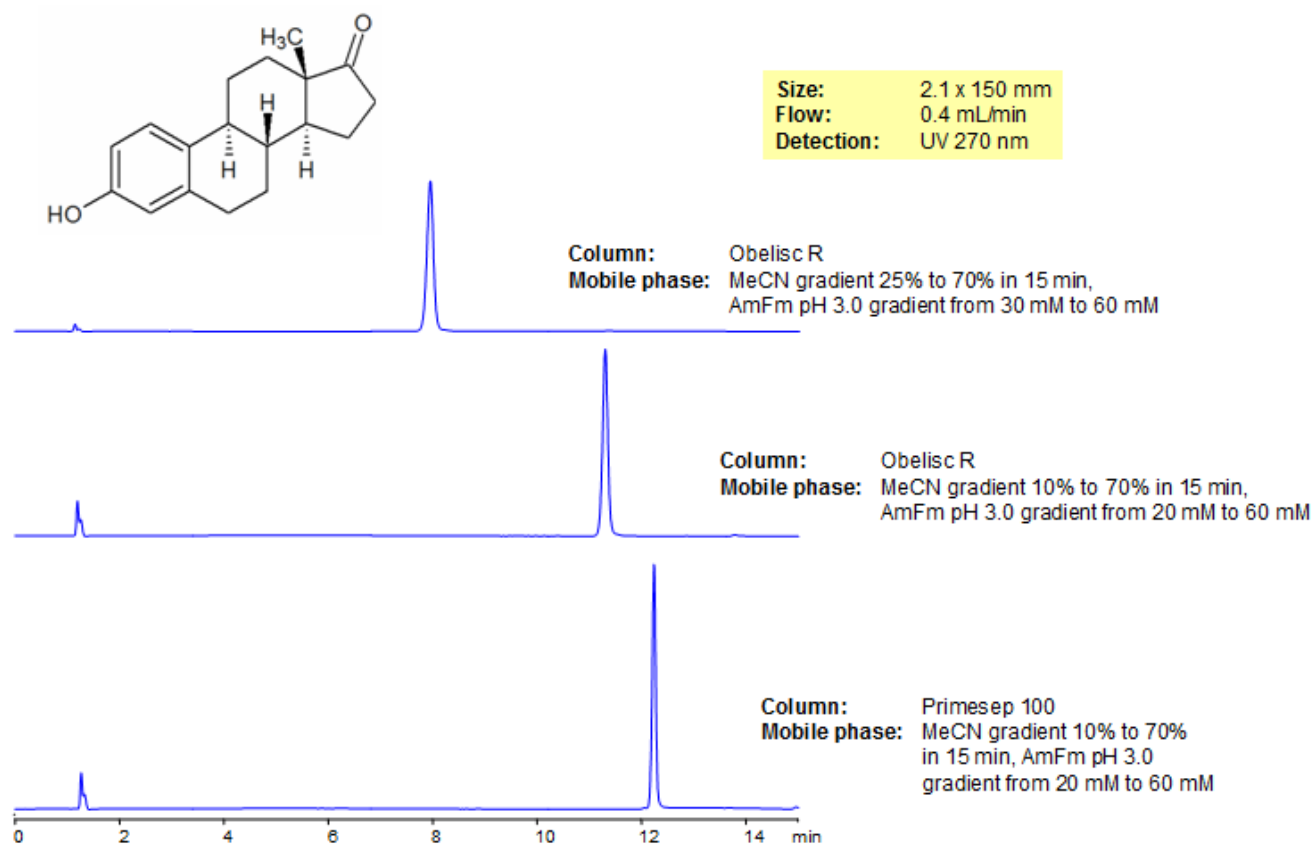


# HPLC Separation of Estrone

<https://sielc.com/Application-HPLC-Separation-of-Estrone>

## Chromatogram



## Description

Estrone, also known as oestrone and E1 is a naturally occurring estrogen which is the predominant estrogen in postmenopausal women. It can be found in its long-lived form estrone sulfate. In certain scenarios estrone can be a carcinogen and causes breast pain, nausea, headaches and leg cramps. It was separated on both Obelisc R and Primesep 100 which have unique modes of retention. Method is LC/MS compatible and useful for separating a number of pesticides.

## Method Parameters

<b>Mobile Phase</b>	Gradient MeCN – 10-70%, 15 min
<b>Buffer</b>	Gradient AmAc pH 3.0- 20-60 mM, 15 min
<b>Flow Rate</b>	0.4 ml/min
<b>Detection</b>	UV, 270 nm
<b>Class of Compounds</b>	Hormone, Hydrophobic, Ionizable
<b>Analyzing Compounds</b>	Estrone

## HPLC Column Used

**Primesep 100, 2.1×150 mm, 5 µm, 100A**

[Order this column at hplc-shop.de](https://www.hplc-shop.de) →