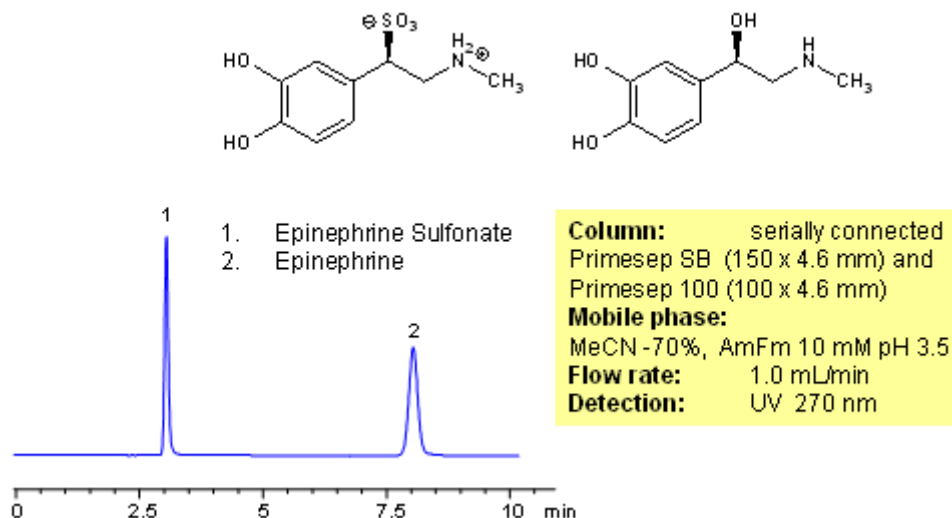


# HPLC Separation of Epinephrine and Epinephrine Sulfonate

<https://sielc.com/Application-HPLC-Separation-of-Epinephrine-and-Epinephrine-Sulfonate>

## Chromatogram



## Description

Epinephrine and epinephrine sulfonate are separated on combination of Primesep 100 and Primesep SB HPLC columns. Primesep 100 column retains epinephrine by combination of reversed-phase and cation-exchange mechanisms. Epinephrine sulfonate is retained by weak reversed-phase mechanism. Due to strong zwitter-ionic nature of epinephrine sulfonate, ionic interaction is not available for this molecule. Compounds can be monitored by UV, ELSD, CAD or LC/MS.

## Method Parameters

Mobile Phase	MeCN/H <sub>2</sub> O – 70/30%
Buffer	AmFm
Flow Rate	1.0 ml/min
Detection	UV, 270 nm
Class of Compounds	Drug, Hydrophilic, Ionizable, Vitamin, Supplements
Analyzing Compounds	Epinephrine, Epinephrine Sulfonate

## HPLC Column Used

**Primesep SB, Primesep 100 4.6x250 mm, 5 µm, 100A**