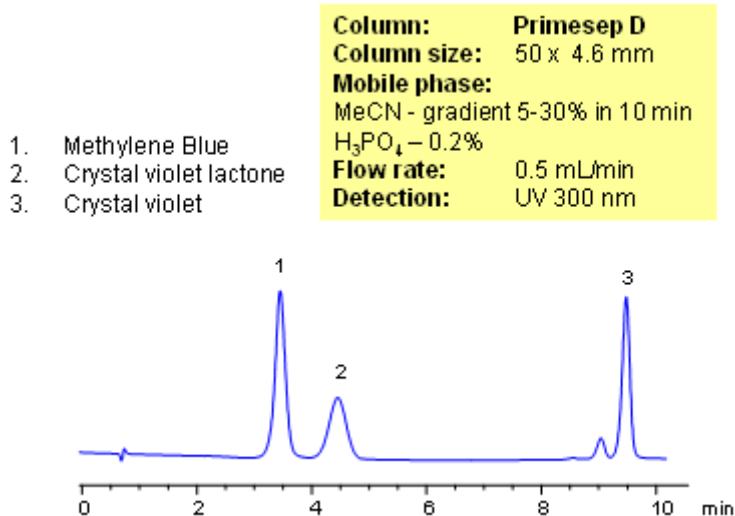


# HPLC Separation of Dyes

<https://sielc.com/Application-HPLC-Separation-of-Dyes>

## Chromatogram



## Description

Various dyes are widely used in food, textile, and pharmaceutical industries. Dyes are aromatic compounds containing ionizable groups. Methylene blue, crystal violet lactone, and crystal violet were separated on a Primesep D HPLC column. Method can be used for separation of other dyes and pigments that are basic and hydrophobic in nature.

## Method Parameters

<b>Mobile Phase</b>	MeCN
<b>Buffer</b>	H <sub>3</sub> PO <sub>4</sub> – 0.2%
<b>Flow Rate</b>	0.5 ml/min
<b>Detection</b>	UV, 300 nm
<b>Class of Compounds</b>	Dye, Hydrophilic, Ionizable
<b>Analyzing Compounds</b>	Methylene Blue, Crystal violet lactone, Crystal violet

## HPLC Column Used

**Primesep D, 4.6x50 mm, 3 µm, 100A**

[Order this column at hplc-shop.de →](#)