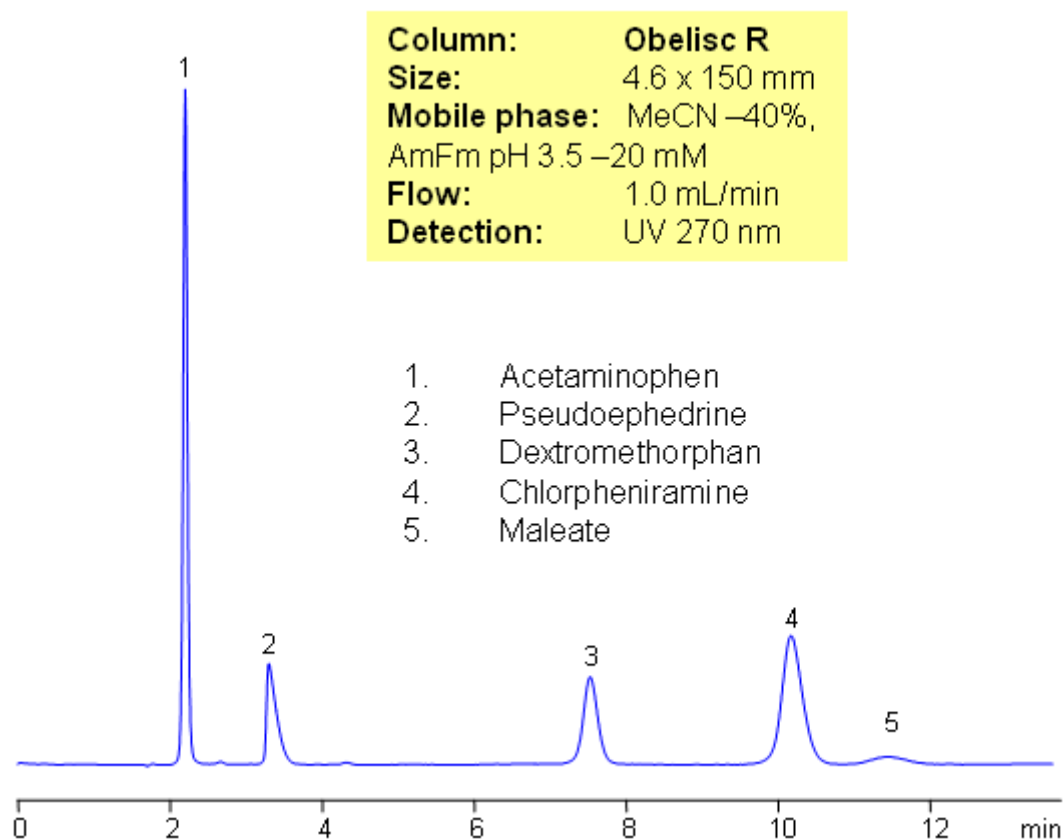


HPLC Separation of Drugs in Tylenol Cold and Cough Remedies

<https://sielc.com/Application-HPLC-Separation-of-Drugs-in-Tylenol-Cold-and-Cough-Remedies>

Chromatogram



Description

Components of Tylenol Cold and Cough Remedy are separated on Obelisc R mixed-mode column. Method can be used to determine compounds in various cough and cold compositions. Neutral (acetaminophen), basic (chlorpheniramine, dextromethorphan and pseudoephedrine) and acidic (maleic acid/Maleate) components are analyzed with perfect peak shape and retention control. Method can be used in production, QC/QA and biological studies for quantitation of various components in pharmaceutical formulations (Advil, Tylenol, Dimetapp, Robitussin, NyQuil, etc)

Method Parameters

Mobile Phase	MeCN
Buffer	AmFm
Flow Rate	1.0 ml/min
Detection	UV, 270 nm
Class of Compounds	Drug, Analgetic, Acid, Hydrophilic, Ionizable, Neutral, Basic
Analyzing Compounds	Maleate, Chlorpheniramine, Dextromethorphan, Pseudoephedrine, Acetaminophen

HPLC Column Used

Obelisc R, 4.6×150 mm, 5 µm, 100A

[Order this column at hplc-shop.de](http://hplc-shop.de) →