

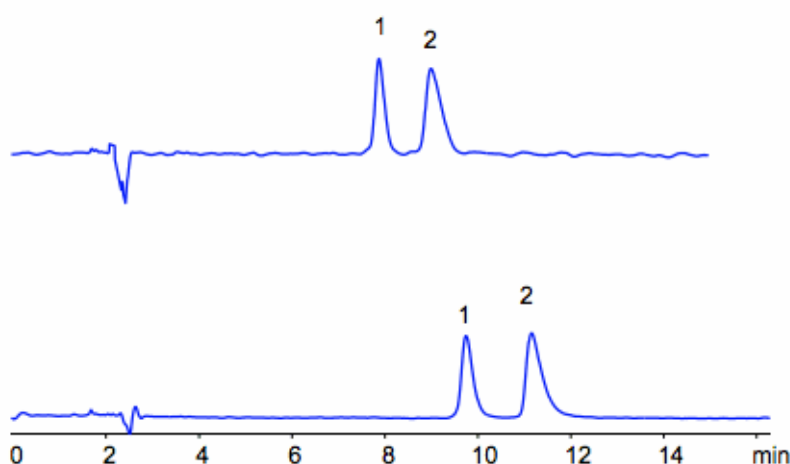
# HPLC Separation of Dopamine and Epinephrine in HILIC and Cation-Exchange Modes

<https://sielc.com/Application-HPLC-Separation-of-Dopamine-and-Epinephrine-in-HILIC-and-Cation-Exchange-Modes>

## Chromatogram

1. Dopamine
2. Epinephrine

**Column:** Primesep S2  
**Size:** 4.6 x 150mm  
**Flow:** 1.0 mL/min  
**Detection:** UV 250 nm



**Mobile phase:** 85% MeCN with 15 mM AmFm pH 3.0

**Mobile phase:** 85% MeCN with 15 mM AmAc pH 4.0

chr\_305.gif

## Description

Dopamine and epinephrine were separated on a Primesep S2 HILIC mixed-mode column. Dopamine and epinephrine are retained by HILIC and cation-exchange mechanisms. Retention time is controlled by the amount of ACN, buffer and buffer pH. Method is compatible with LC/MS and can be used for analysis of polar metabolites in biofluids.

## Method Parameters

|                     |  |
|---------------------|--|
| Mobile Phase        | MeCN/H <sub>2</sub> O  |
| Buffer              | AmFm   |
| Flow Rate           | 1.0 ml/min   |
| Detection           | UV, 250 nm   |
| Class of Compounds  | Drug, Acid, Monocarboxylic acid, Hydrophilic, Ionizable, Hormone |
| Analyzing Compounds | Dopamine, Epinephrine  |

## HPLC Column Used

**Primesep S2, 4.6x150 mm, 5 µm, 100A**

[Order this column at hplc-shop.de →](http://hplc-shop.de)