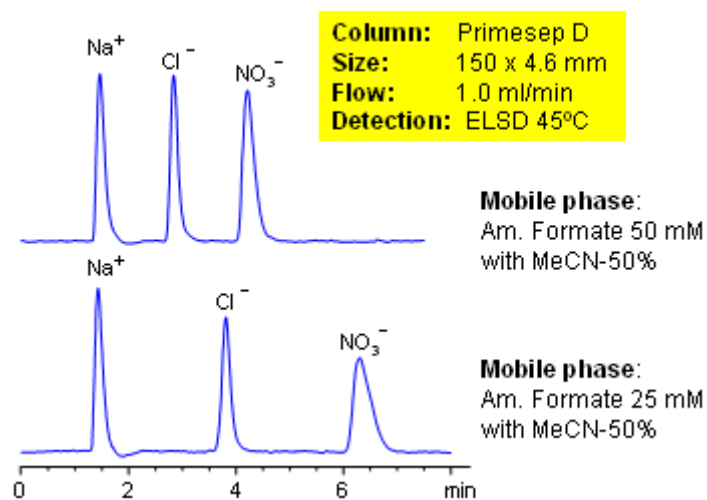


HPLC Separation of Chloride and Nitrate Ions

<https://sielc.com/Application-HPLC-Separation-of-Chloride-and-Nitrate-Ions>

Chromatogram



Description

High nitrate concentrations in water and soil can be toxic to humans, fish and domestic animals. Chloride can be used for analysis of water contamination. Primesep D column can be used to separate and quantify both ions. The baseline separation between chloride and nitrate can be increased by decreasing the ammonium formate concentration in the mobile phase. Evaporative Light Scattering Detection (ELSD) used.

Method Parameters

Mobile Phase	MeCN/H ₂ O
Buffer	AmFm
Flow Rate	1.0 ml/min
Detection	ELSD
Class of Compounds	Hydrophilic, Ion
Analyzing Compounds	Chloride, Nitrate

HPLC Column Used

Primesep D, 4.6x150 mm, 5 µm, 100A

[Order this column at hplc-shop.de](https://www.hplc-shop.de) →