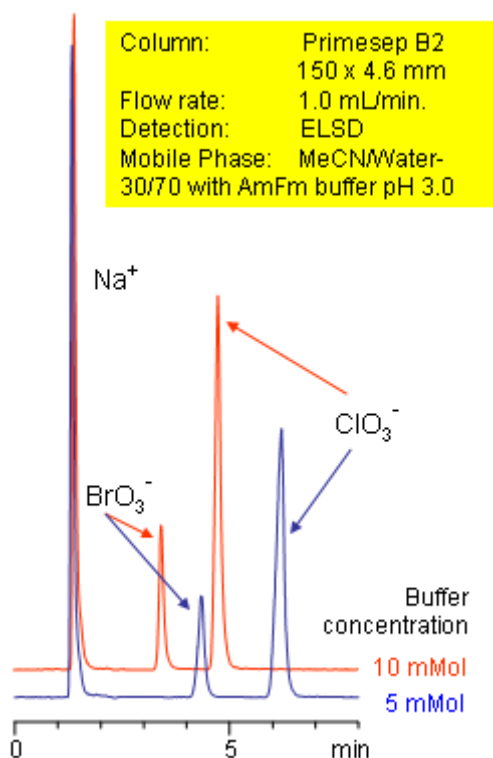


HPLC Separation of Chlorate and Bromate Ions

<https://sielc.com/Application-HPLC-Separation-of-Chlorate-and-Bromate-Ions>

Chromatogram



Description

Primesep B2 separates chlorate and bromate by an ion-exchange mechanism. The anion-exchange properties of the column allow retention of hydrophilic compounds, and these properties can be adjusted by simply changing the ammonium formate buffer concentration. The HPLC separation uses a mobile phase of water, acetonitrile (MeCN, ACN) and ammonium formate with evaporative light scattering detection (ELSD).

Method Parameters

Mobile Phase	MeCN/H ₂ O – 30/70%
Buffer	AmFm pH 3.0
Flow Rate	1.0 ml/min
Detection	CAD
Class of Compounds	Ions, Hydrophilic, Ionizable
Analyzing Compounds	Sodium Chlorate, Sodium Bromate

HPLC Column Used

Primesep B2, 4.6x150 mm, 5 µm, 100A

[Order this column at hplc-shop.de →](http://hplc-shop.de)